

# On Her Majesty's Secret Service

## *James Bond 007*

*On Her Majesty's Secret Service / Battle At Piz Gloria / Do You Know How  
Christmas Trees Are Grown / This Never Happened To The Other Fella /  
We Have All The Time In The World*

## Brass Band

Arr.: Marcel Saurer / Adapt.: Bertrand Moren

## John Barry

EMR 9528

- |   |                                    |   |  |
|---|------------------------------------|---|--|
| 1 | Full Score                         | 2 | 1 <sup>st</sup> Trombone $\text{♩} + \text{♭}$ |
| 1 | E $\flat$ Cornet                   | 2 | 2 <sup>nd</sup> Trombone $\text{♩} + \text{♭}$ |
| 3 | Solo B $\flat$ Cornet I            | 1 | Bass Trombone $\text{♩} + \text{♭}$            |
| 3 | Solo B $\flat$ Cornet II           | 2 | B $\flat$ Euphonium                            |
| 1 | Repiano B $\flat$ Cornet           | 3 | E $\flat$ Bass                                 |
| 3 | 2 <sup>nd</sup> B $\flat$ Cornet   | 3 | B $\flat$ Bass                                 |
| 3 | 3 <sup>rd</sup> B $\flat$ Cornet   | 1 | Bass Guitar ( <i>optional</i> )                |
| 1 | B $\flat$ Flugelhorn               | 1 | Timpani  |
| 2 | Solo E $\flat$ Horn                | 1 | Xylophone / Glockenspiel                       |
| 2 | 1 <sup>st</sup> E $\flat$ Horn     | 1 | Tambourine                                     |
| 2 | 2 <sup>nd</sup> E $\flat$ Horn     | 1 | Drums  |
| 2 | 1 <sup>st</sup> B $\flat$ Baritone |   |  |
| 2 | 2 <sup>nd</sup> B $\flat$ Baritone |   |  |

**Print & Listen**  
**Drucken & Anhören**  
**Imprimer & Ecouter**



**www.reift.ch**



**EDITIONS MARC REIFT**

Route du Golf 150 • CH-3963 Crans-Montana (Switzerland)  
Tel. +41 (0) 27 483 12 00 • E-Mail : [info@reift.ch](mailto:info@reift.ch) • [www.reift.ch](http://www.reift.ch)

# DISCOGRAPHY



## Cinemagic 34

Track N°	Titel / Title (Komponist / Composer)	Time	N° EMR Blasorchester Concert Band	N° EMR Brass Band
1	Lara Croft: Tomb Raider (Silvestri)	10'15	EMR 11954	EMR 9522
2	Dr. No (Norman)	6'26	EMR 11871	EMR 9523
3	The Sicilian Clan (Morricone)	7'33	EMR 11938	EMR 9524
4	Conradiana (Morricone)	3'44	EMR 11536	EMR 9525
5	Prince Of Egypt (Schwarz)	7'09	EMR 11877	EMR 9526
6	Love Affair (Morricone)	3'55	EMR 11947	EMR 9527
7	On Her Majesty's Secret Service (Barry)	7'50	EMR 11955	EMR 9528
8	La Dolce Vita (Rota)	8'50	EMR 11912	EMR 9529

**Zu bestellen bei • A commander chez • To be ordered from:**

Editions Marc Reift • Route du Golf 150 • CH-3963 Crans-Montana (Switzerland) • Tel. +41 (0) 27 483 12 00 • Fax +41 (0) 27 483 42 43 • E-Mail: info@reift.ch • www.reift.ch



# On Her Majesty's Secret Service

John Barry

Arr.: Marcel Saurer

Adapt.: Bertrand Moren

## "On Her Majesty's Secret Service"

4 5 6 7 8 **A** 9

Allegro ♩ = 120

Score for "On Her Majesty's Secret Service" featuring various instruments:

- E♭ Cornet
- Solo B♭ Cornet I
- Solo B♭ Cornet II
- Repiano B♭ Cornet
- 2nd B♭ Cornet
- 3rd B♭ Cornet
- B♭ Flugel Horn
- Solo E♭ Horn
- 1st E♭ Horn
- 2nd E♭ Horn
- 1st B♭ Baritone
- 2nd B♭ Baritone
- 1st B♭ Trombone
- 2nd B♭ Trombone
- Bass Trombone
- B♭ Euphonium
- E♭ Bass
- B♭ Bass
- Bass Guitar (optional)
- Timpani
- Xylophone / Glockenspiel
- Tambourine
- Drums (including Ride Cymbal)

Dynamic markings include *f*, *mf*, and *p*. The score includes a section labeled **A** starting at measure 8.

EMR 9528

Eb Cnt. *mp*  
 Solo Cnt.I  
 Solo Cnt.II  
 Rep. Cnt. *mp*  
 2nd Cnt.  
 3rd Cnt.  
 Flug. *mp*  
 Solo Hn. *mp*  
 1st Hn. *mp*  
 2nd Hn. *mp*  
 1st Bar. *mp*  
 2nd Bar. *mp*  
 1st Tbn. *mp*  
 2nd Tbn. *mp*  
 B. Tbn. *mp*  
 Euph. *mp*  
 Eb Bass  
 Bb Bass  
 B. Gtr.  
 Timp.  
 Xyl.  
 Tamb. 2 3 4 5 6  
 Dr. 2 3 4 5 6

**E** "Battle At Piz Gloria"  
meno mosso ♩ = 80

69

70

71

72

73

74

75

76

Score for "Battle At Piz Gloria" (meno mosso, ♩ = 80). The score includes parts for Eb Cnt., Solo Cnt. I, Solo Cnt. II, Rep. Cnt., 2nd Cnt., 3rd Cnt., Flug., Solo Hn., 1st Hn., 2nd Hn., 1st Bar., 2nd Bar., 1st Tbn., 2nd Tbn., B. Tbn., Euph., Eb Bass, Bb Bass, B. Gtr., Timp., Xyl., Tamb., and Dr. The score is divided into measures 69-76. Dynamics include *mf*, *f*, and *p*. The key signature is Bb major. The tempo is marked "meno mosso" with a metronome marking of ♩ = 80.

Eb Cnt.  
 Solo Cnt. I  
 Solo Cnt. II  
 Rep. Cnt.  
 2nd Cnt.  
 3rd Cnt.  
 Flug.  
 Solo Hn.  
 1st Hn.  
 2nd Hn.  
 1st Bar.  
 2nd Bar.  
 1st Tbn.  
 2nd Tbn.  
 B. Tbn.  
 Euph.  
 Eb Bass  
 Bb Bass  
 B. Gtr.  
 Timp.  
 Xyl.  
 Tamb.  
 Dr.

"Do You Know How Christmas Trees Are Grown" Moderato  $\text{♩} = 92$

Eb Cnt. *mf*  
 Solo Cnt.I *mf* Solo *mf*  
 Solo Cnt.II *mf*  
 Rep. Cnt. *mf*  
 2nd Cnt. *mf*  
 3rd Cnt. *mf*  
 Flug. *mf* *mp*  
 Solo Hn. *mf* *mp*  
 1st Hn. *mf* *mp*  
 2nd Hn. *mf* *mp*  
 1st Bar. *mf* *mp*  
 2nd Bar. *mf* *mp*  
 1st Tbn. *mf*  
 2nd Tbn. *mf*  
 B. Tbn. *mf*  
 Euph. *mf* *mp*  
 Eb Bass *mf*  
 Bb Bass *mf*  
 B. Gtr. *mf* pizz.  
 Timp. *mf*  
 Xyl. *mf* Glsp.  
 Tamb.  
 Dr. *mf* Ride Cymb. 2 3 4 5 6 7 8

Eb Cnt. *mf* *f*  
 Solo Cnt. I *f* Tutti  
 Solo Cnt. II *f*  
 Rep. Cnt. *mf*  
 2nd Cnt. *mf*  
 3rd Cnt. *mf*  
 Flug. *mf*  
 Solo Hn. *f*  
 1st Hn. *f*  
 2nd Hn. *f*  
 1st Bar. *f*  
 2nd Bar. *f*  
 1st Tbn. *f*  
 2nd Tbn. *f*  
 B. Tbn. *f*  
 Euph. *f*  
 Eb Bass *f*  
 Bb Bass *f*  
 B. Gtr. *f*  
 Timp.  
 Glsp.  
 Tamb.  
 Dr. 9 10 11 12 13 14



"This Never Happened To The Other Fella"

Moderato ♩ = 92

rit.

Score for various instruments including Eb Cnt., Solo Cnt. I & II, Rep. Cnt., 2nd & 3rd Cnt., Flug., Solo Hn., 1st & 2nd Hn., 1st & 2nd Bar., 1st & 2nd Tbn., B. Tbn., Euph., Eb Bass, Bb Bass, B. Gtr., Timp., Glsp., Tamb., and Dr.

Key signature: B-flat major (two flats). Time signature: Common time (C).

Tempo: Moderato (♩ = 92). Performance instruction: rit. (ritardando).

Dynamic markings include *f* (forte), *p* (piano), and *arco* (arco).

Other markings include *Tutti* and *vc* (vibrato).

**Allegro** ♩ = 120

Eb Cnt. *ff* *mf* *leggero*  
 Solo Cnt.I *ff* *mf* *mf*  
 Solo Cnt.II *ff* *mf* *mf*  
 Rep. Cnt. *ff*  
 2nd Cnt. *ff*  
 3rd Cnt. *ff*  
 Flug. *ff*  
 Solo Hn. *ff* *p*  
 1st Hn. *ff* *p*  
 2nd Hn. *ff* *p*  
 1st Bar. *ff* *p*  
 2nd Bar. *ff* *p*  
 1st Tbn. *ff* *p*  
 2nd Tbn. *ff* *p*  
 B. Tbn. *ff* *p*  
 Euph. *ff* *p*  
 Eb Bass *ff* *p*  
 Bb Bass *ff* *p*  
 B. Gtr. *ff* *pizz.* *p*  
 Timp. *ff*  
 Xyl. *ff* *leggero* *mf*  
 Tamb. *ff* *p* 2 3 4  
 Dr. *ff* *p* 2 3  
*p Ride Cymb.*

**L** "We Have All The Time In The World"  
Lento ♩ = 72

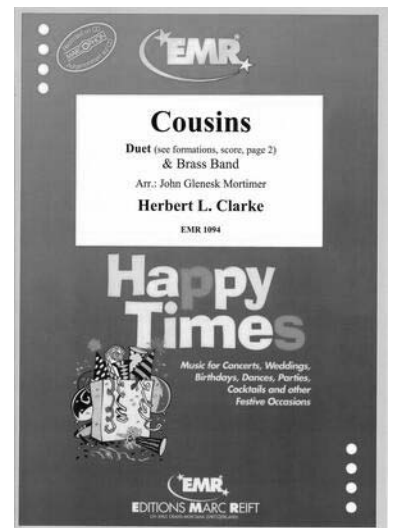
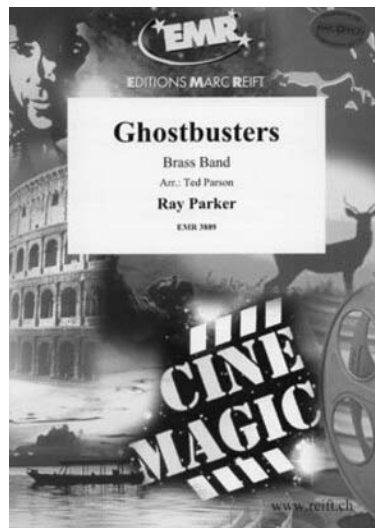
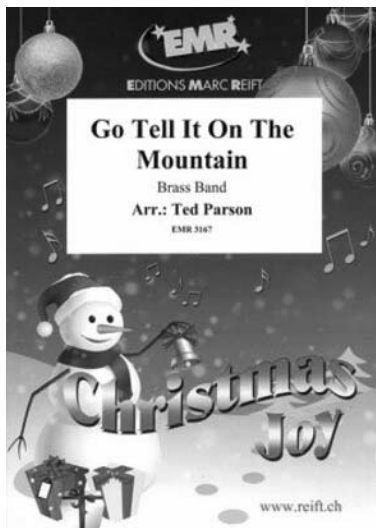
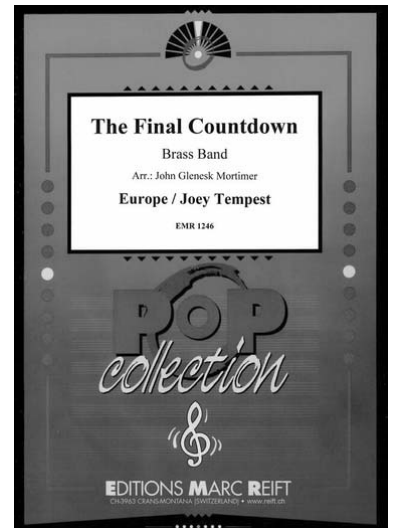
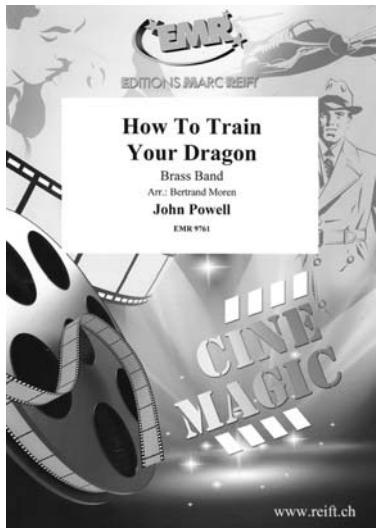
Eb Cnt. *mf* 3  
 Solo Cnt.I  
 Solo Cnt.II  
 Rep. Cnt. Open *mf* 3  
 2nd Cnt. Open  
 3rd Cnt. Open  
 Flug. *mf*  
 Solo Hn. *mf*  
 1st Hn. *mf*  
 2nd Hn.  
 1st Bar. *mp*  
 2nd Bar. *mp*  
 1st Tbn.  
 2nd Tbn.  
 B. Tbn.  
 Euph. *mp*  
 Eb Bass *mp*  
 Bb Bass *mp*  
 B. Gtr. *mp*  
 Timp. *tr*  
 Xyl.  
 Tamb.  
 Dr.

The image shows a page of a musical score for a symphony orchestra and vocal soloists. The score is for measures 161, 162, and 163. The tempo is Lento (♩ = 72). The key signature has two flats (Bb and Eb). The score includes parts for Eb Clarinet, Solo Clarinet I and II, Repetition Clarinet, 2nd and 3rd Clarinets, Flute, Solo Horn, 1st and 2nd Horns, 1st and 2nd Baritone, Bass Trombone, Euphonium, Eb Bass, Bb Bass, Bass Guitar, Timpani, Xylophone, Tambourine, and Drums. Dynamics include mf (mezzo-forte) and mp (mezzo-piano). There are triplets in the Eb Clarinet, Repetition Clarinet, and Solo Horn parts. The Flute part has a 'mf' dynamic. The Baritone, Bass Trombone, Euphonium, Eb Bass, Bb Bass, and Bass Guitar parts have 'mp' dynamics. The Timpani part has a 'tr' (trill) marking. The Solo Clarinet I and II parts have a 'mf' dynamic. The 1st and 2nd Horn parts have 'mf' dynamics. The 1st and 2nd Baritone parts have 'mp' dynamics. The 1st and 2nd Trombone parts have 'mp' dynamics. The Euphonium part has 'mp' dynamics. The Eb Bass part has 'mp' dynamics. The Bb Bass part has 'mp' dynamics. The Bass Guitar part has 'mp' dynamics. The Timpani part has 'tr' dynamics. The Xylophone part has 'mf' dynamics. The Tambourine and Drums parts have 'mf' dynamics.

**più mosso** ♩ = 92

Eb Cnt. *mf*<sup>3</sup>  
 Solo Cnt.I *mf* Solo, open  
 Solo Cnt.II  
 Rep. Cnt. *mf*<sup>3</sup>  
 2nd Cnt.  
 3rd Cnt.  
 Flug. *mf*<sup>3</sup>  
 Solo Hn. *mp*  
 1st Hn. *mp*  
 2nd Hn. *mp*  
 1st Bar. *mp*  
 2nd Bar. *mp*  
 1st Tbn. *mp*  
 2nd Tbn. *mp*  
 B.Tbn. *mp*  
 Euph. *mp*  
 Eb Bass *mf*  
 Bb Bass *mf*  
 B.Gtr. *mf*  
 Timp.  
 Xyl.  
 Tamb.  
 Dr. *mf* Pickup ad lib. closed Hi-Hat

# Collection Brass Band



Discover all our scores for Brass Band

Entdecken Sie alle unsere Noten für Brass Band

Découvrez toutes nos partitions pour Brass Band

SCAN  
ME >



Use the filters to refine your search and find for example the style of your choice!

Nutzen Sie die Filter, um Ihre Suche zu verfeinern und zum Beispiel den Stil Ihrer Wahl zu finden!

Utilisez les filtres pour affiner votre recherche et trouver par exemple le style de votre choix!