

Heaven Is A Place On Earth

As sung by Belinda Carlisle

Brass Band

Arr.: Jirka Kadlec

Adapt.: Bertrand Moren

Ellen Shipley / Rick Nowels

EMR 82429

- | | | | |
|---|---|---|--|
| 1 | Full Score | 2 | 1 st Trombone  |
| 1 | E ^b Cornet | 2 | 2 nd Trombone  |
| 3 | Solo B ^b Cornet I | 1 | Bass Trombone  |
| 3 | Solo B ^b Cornet II | 2 | B ^b Euphonium |
| 1 | Repiano B ^b Cornet | 3 | E ^b Bass |
| 3 | 2 nd B ^b Cornet | 3 | B ^b Bass |
| 3 | 3 rd B ^b Cornet | 1 | Piano / Keyboard <i>(optional)</i> |
| 1 | B ^b Flugelhorn | 1 | Electric Guitar <i>(optional)</i> |
| 2 | Solo E ^b Horn | 1 | Bass Guitar <i>(optional)</i> |
| 2 | 1 st E ^b Horn | 1 | Tambourine |
| 2 | 2 nd E ^b Horn | 1 | Tenor Drum |
| 2 | 1 st B ^b Baritone | 1 | Drums |
| 2 | 2 nd B ^b Baritone | | |

Print & Listen
Drucken & Anhören
Imprimer & Ecouter



www.reift.ch



EDITIONS MARC REIFT

Route du Golf 150 • CH-3963 Crans-Montana (Switzerland)
Tel. +41 (0) 27 483 12 00 • E-Mail : info@reift.ch • www.reift.ch

DISCOGRAPHY



Heaven

Track N°	Titel / Title (Komponist / Composer)	Time	N° EMR Blasorchester Concert Band	N° EMR Brass Band	N° EMR Big Band
1	Nutcracker Swing (Kadlec)	3'50	EMR 42521	EMR 82418	EMR 57809
2	Epic Fugue (Kadlec)	3'29	EMR 42649	EMR 82419	EMR 70998
3	Clarinero (Kadlec)	3'29	EMR 42364	-	EMR 51711
4	Salve Regina Coelitum (Arr.: Kadlec)	3'09	EMR 42643	EMR 82420	EMR 70996
5	That's A Plenty (Pollack)	3'09	EMR 79024	EMR 79037	EMR 79011
6	Storm (Kadlec)	3'00	EMR 42425	EMR 32773	EMR 51704
7	The Last Rose Of Summer (Arr.: Kadlec)	3'39	EMR 42691	EMR 82421	EMR 75684
8	Smoke Gets In Your Eyes (Kern)	2'52	EMR 42786	EMR 82422	EMR 80529
9	Ding Dong Merrily On High (Woodward)	3'21	EMR 42707	EMR 82423	EMR 75889
10	Western Medley (Kadlec)	5'05	EMR 42430	EMR 32774	EMR 51705
11	It Came Upon A Midnight Clear (Arr.: Kadlec)	2'50	EMR 42711	EMR 82424	EMR 75891
12	Carrickfergus (Arr.: Kadlec)	3'09	EMR 42517	EMR 82425	EMR 57807
13	Amazing Grace (Arr.: Kadlec)	2'34	EMR 42766	EMR 82426	EMR 80520
14	Somebody Loves Me (Gershwin)	3'11	EMR 12888	EMR 82088	EMR 51697
15	Away In A Manger (Arr.: Kadlec)	2'39	EMR 42709	EMR 82427	EMR 75890
16	Sail Along Silvery Moon (Wenrich)	2'53	EMR 42639	EMR 82428	EMR 70994
17	Heaven Is A Place On Earth (Shipley / Nowels)	3'21	EMR 42640	EMR 82429	EMR 51709
18	Shall We Gather At The River (Lowry)	3'00	EMR 42635	EMR 82430	EMR 70992

Zu bestellen bei • A commander chez • To be ordered from:



Heaven Is A Place On Earth

as sung by *Belinda Carlisle*

Words and Music

Ellen Shipley & Rick Nowels

Arr.: Jirka Kadlec / Adapt.: Bertrand Moren

1 2 3 4 5 6 7 8

$\text{♩} = 126$

Eb Cornet *f*
 Solo Bb Cornet I *f*
 Solo Bb Cornet II *f*
 Repiano Bb Cornet *f*
 2nd Bb Cornet *f*
 3rd Bb Cornet *f*
 Bb Flugel Horn *f*
 Solo Eb Horn *f*
 1st Eb Horn *f*
 2nd Eb Horn *f*
 1st Bb Baritone *f*
 2nd Bb Baritone *f*
 1st Bb Trombone *f*
 2nd Bb Trombone *f*
 Bass Trombone *f*
 Bb Euphonium *f*
 Eb Bass *f*
 Bb Bass *f*
 Piano / Keyboard (optional) *f*
 Electric Guitar (optional) *f* *dist.*
 Bass Guitar (optional) *f*
 Tambourine
 Tenor Drum *f*
 Drums *ff*

EMR 82429

Eb Cnt.
 Solo Cnt. I
 Solo Cnt. II
 Rep. Cnt.
 2nd Cnt.
 3rd Cnt.
 Flug.
 Solo Hn.
 1st Hn. *mp cresc.*
 2nd Hn. *mp cresc.*
 1st Bar.
 2nd Bar.
 1st Tbn. *mp cresc.*
 2nd Tbn. *mp cresc.*
 B. Tbn.
 Euph.
 Eb Bass
 Bb Bass
 Pno./Kbd.
 E. Gtr. *dist.*
 B. Gtr.
 Tamb. *mp*
 T.D. *f*
 Dr. *f* H.H.

Cm Ab Bb Cm Bb Eb Ab Bb(SUS4) Bb Cm Ab Bb Cm Bb

(2) (3) (4) (5) (6)

Eb Cnt. *mf*
 Solo Cnt. I *mf*
 Solo Cnt. II *mf*
 Rep. Cnt. *mf*
 2nd Cnt. *mf*
 3rd Cnt. *mf*
 Flug. *mf*
 Solo Hn. *mf*
 1st Hn. *mf*
 2nd Hn. *mf*
 1st Bar. *mp*
 2nd Bar. *mp*
 1st Tbn. *mp*
 2nd Tbn. *mp*
 B. Tbn. *mp*
 Euph. *mp*
 Eb Bass *mf*
 Bb Bass *mf*
 Pno./Kbd. *mp*
 E. Gtr. *mf*
 B. Gtr. *mf*
 Tamb. (7) *mf*
 T.D. (7) *mf*
 Dr. (7) *mf*

Eb Ab Bb(sus4) Bb Cm Eb Bb Ab Bb Bb(sus4)
 Eb natur. Bb Ab Bb Bb(sus4)

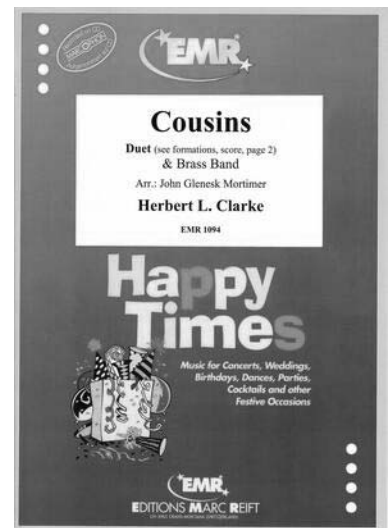
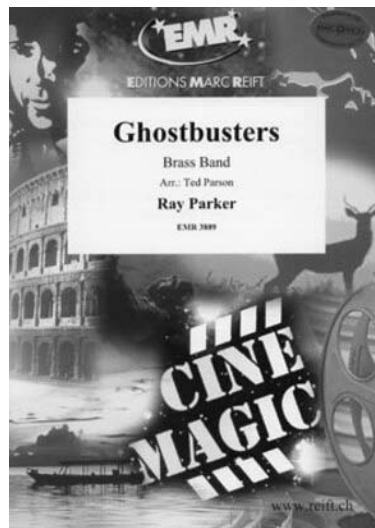
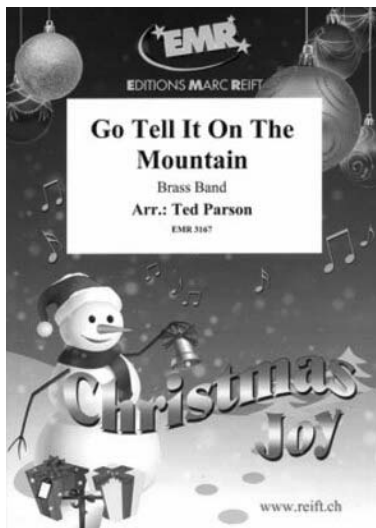
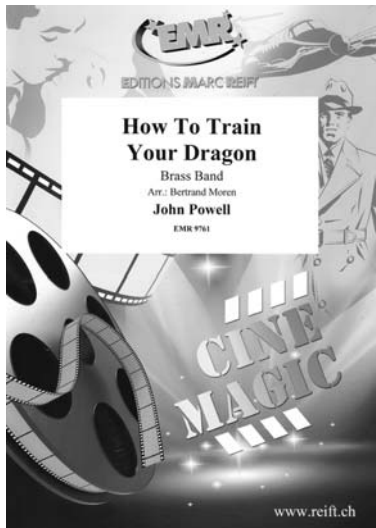
(2) (3) (4)
 RIDE (3) (4)

Eb Cnt.
 Solo Cnt. I
 Solo Cnt. II
 Rep. Cnt.
 2nd Cnt.
 3rd Cnt.
 Flug.
 Solo Hn.
 1st Hn.
 2nd Hn.
 1st Bar.
 2nd Bar.
 1st Tbn.
 2nd Tbn.
 B. Tbn.
 Euph.
 Eb Bass
 Bb Bass
 Pno./Kbd.
 E. Gtr.
 B. Gtr.
 Tamb.
 T.D.
 Dr.

D

Musical score for Eb Cnt., Solo Cnt. I, Solo Cnt. II, Rep. Cnt., 2nd Cnt., 3rd Cnt., Flug., Solo Hn., 1st Hn., 2nd Hn., 1st Bar., 2nd Bar., 1st Tbn., 2nd Tbn., B. Tbn., Euph., Eb Bass, Bb Bass, Pno./Kbd., E. Gtr., B. Gtr., Tamb., T.D., and Dr. The score includes various musical notations such as notes, rests, and dynamic markings like 'f' and 'mf'.

Collection Brass Band



Discover all our scores for Brass Band

Entdecken Sie alle unsere Noten für Brass Band

Découvrez toutes nos partitions pour Brass Band

**SCAN
ME** ➔



Use the filters to refine your search and find for example the style of your choice!

Nutzen Sie die Filter, um Ihre Suche zu verfeinern und zum Beispiel den Stil Ihrer Wahl zu finden!

Utilisez les filtres pour affiner votre recherche et trouver par exemple le style de votre choix!