

Concerto

A^b Major (S.49, WoO.1 – 1803)

Bass Trombone & Piano

Arr.: Michal Worek

Johann Nepomuk Hummel

EMR 58469

**Print & Listen
Drucken & Anhören
Imprimer & Ecouter**



www.reift.ch



EDITIONS MARC REIFT

Route du Golf 150 • CH-3963 Crans-Montana (Switzerland)

Tel. +41 (0) 27 483 12 00 • Fax +41 (0) 27 483 42 43 • E-Mail : info@reift.ch • www.reift.ch

BASS
TROMBONE

Concerto

A♭ Major (S.49, WoO.1 - 1803)

I

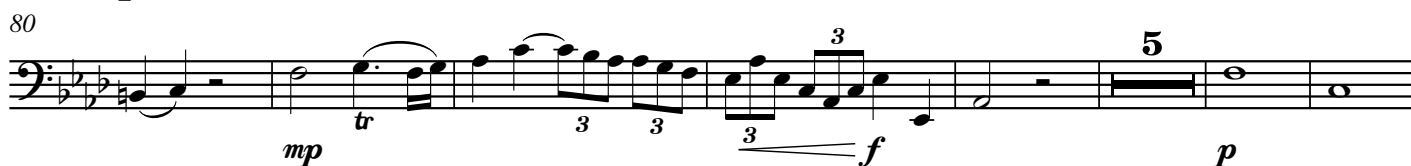
Johann Nepomuk Hummel

Arr.: Michal Worek

Allegro con spirito ♩ = 130

Pno. (R.H.)

Photocopying
is illegal!



EMR 58469

© COPYRIGHT BY EDITIONS MARC REIFT CH-3963 CRANS-MONTANA (SWITZERLAND)
ALL RIGHTS RESERVED - INTERNATIONAL COPYRIGHT SECURED

www.reift.ch

Concerto

A♭ Major (S.49, WoO.1 - 1803)

I

Johann Nepomuk Hummel

Arr.: Michal Worek

Allegro con spirito ♩ = 130

Bass Trombone

Piano

Measures 1-5 of the first system. The Bass Trombone part is in the upper staff, and the Piano part is in the lower staff. The Piano part begins with a forte (f) dynamic in measure 1 and a piano (p) dynamic in measure 2. The key signature is A-flat major (three flats) and the time signature is common time (C).

6

Measures 6-10 of the first system. The Bass Trombone part continues with rests. The Piano part features a forte (f) dynamic in measure 6 and continues with various rhythmic patterns.

11

Measures 11-15 of the first system. The Bass Trombone part continues with rests. The Piano part continues with various rhythmic patterns.

16

Measures 16-20 of the first system. The Bass Trombone part continues with rests. The Piano part features a piano (p) dynamic in measure 19. An 8va (octave up) marking is present in measure 17.

21

Measures 21-25 of the first system. The Bass Trombone part continues with rests. The Piano part features a fortissimo (ff) dynamic in measure 21 and includes triplets in measures 22 and 23.

25

Measures 25-28 of a musical score. The piece is in 3/4 time with a key signature of three flats (B-flat, E-flat, A-flat). The right hand features a continuous eighth-note arpeggiated pattern. The left hand plays a steady eighth-note accompaniment.

29

Measures 29-33. The right hand has a melodic line with some rests. The left hand continues the eighth-note accompaniment. Dynamic markings include *p* (piano) at measure 31 and *sf p* (sforzando piano) at measure 33.

34

Measures 34-38. The right hand plays a series of chords. The left hand continues the eighth-note accompaniment.

39

Measures 39-43. The right hand features a series of chords. The left hand continues the eighth-note accompaniment. Dynamic markings include *f* (forte) at measure 39 and *pp* (pianissimo) at measure 41.

44

Measures 44-48. The right hand has a melodic line with some rests. The left hand continues the eighth-note accompaniment. Dynamic markings include *fz* (forzando), *p* (piano), *pp* (pianissimo), *sf* (sforzando), and *f* (forte).

49

Measures 49-53. The right hand has a melodic line with some rests. The left hand continues the eighth-note accompaniment. Dynamic markings include *p* (piano) at measure 49 and *f* (forte) at measure 51.

54

Measures 54-58 of the musical score. The bass line is mostly silent. The right hand features a series of chords and arpeggiated figures. The left hand plays a steady eighth-note accompaniment.

59

Measures 59-63. The right hand has a melodic line with some grace notes. The left hand continues the eighth-note accompaniment. Dynamics include *f*, *sf*, *sf*, *sf*, and *p*.

64

Measures 64-68. The right hand has a melodic line with a triplet in measure 65. The left hand has a melodic line with some rests. Dynamics include *f* and *mf*.

69

Measures 69-73. The right hand has a melodic line with some rests. The left hand has a melodic line with some rests. Dynamics include *p*.

74

Measures 74-78. The right hand has a melodic line with some rests. The left hand has a melodic line with some rests.

79

Measures 79-83. The right hand has a melodic line with some rests. The left hand has a melodic line with some rests. Dynamics include *mp* and *tr*.

II

Andante ♩ = 70

Measures 1-13 of the musical score, marked Andante (♩ = 70). The score is written for piano in 4/4 time, featuring complex triplet patterns and dynamic markings.

Measure 1: Bass clef, 4/4 time. Treble clef: *f* (forte), quarter note G₄, quarter note A₄, quarter note B₄. Bass clef: *f*, quarter note G₃, quarter note A₃, quarter note B₃.

Measure 2: Treble clef: *p* (piano), triplet of eighth notes G₄, A₄, B₄, triplet of eighth notes C₅, B₄, A₄, triplet of eighth notes G₄, F₄, E₄, triplet of eighth notes D₄, C₄, B₃. Bass clef: *p*, quarter note G₃, quarter note A₃, quarter note B₃.

Measure 3: Treble clef: *p*, triplet of eighth notes G₄, A₄, B₄, triplet of eighth notes C₅, B₄, A₄, triplet of eighth notes G₄, F₄, E₄, triplet of eighth notes D₄, C₄, B₃. Bass clef: *p*, quarter note G₃, quarter note A₃, quarter note B₃.

Measure 4: Treble clef: *p*, triplet of eighth notes G₄, A₄, B₄, triplet of eighth notes C₅, B₄, A₄, triplet of eighth notes G₄, F₄, E₄, triplet of eighth notes D₄, C₄, B₃. Bass clef: *p*, quarter note G₃, quarter note A₃, quarter note B₃.

Measure 5: Treble clef: *p*, triplet of eighth notes G₄, A₄, B₄, triplet of eighth notes C₅, B₄, A₄, triplet of eighth notes G₄, F₄, E₄, triplet of eighth notes D₄, C₄, B₃. Bass clef: *p*, quarter note G₃, quarter note A₃, quarter note B₃.

Measure 6: Treble clef: *p*, triplet of eighth notes G₄, A₄, B₄, triplet of eighth notes C₅, B₄, A₄, triplet of eighth notes G₄, F₄, E₄, triplet of eighth notes D₄, C₄, B₃. Bass clef: *p*, quarter note G₃, quarter note A₃, quarter note B₃.

Measure 7: Treble clef: *p*, triplet of eighth notes G₄, A₄, B₄, triplet of eighth notes C₅, B₄, A₄, triplet of eighth notes G₄, F₄, E₄, triplet of eighth notes D₄, C₄, B₃. Bass clef: *p*, quarter note G₃, quarter note A₃, quarter note B₃.

Measure 8: Treble clef: *p*, triplet of eighth notes G₄, A₄, B₄, triplet of eighth notes C₅, B₄, A₄, triplet of eighth notes G₄, F₄, E₄, triplet of eighth notes D₄, C₄, B₃. Bass clef: *p*, quarter note G₃, quarter note A₃, quarter note B₃.

Measure 9: Treble clef: *p*, triplet of eighth notes G₄, A₄, B₄, triplet of eighth notes C₅, B₄, A₄, triplet of eighth notes G₄, F₄, E₄, triplet of eighth notes D₄, C₄, B₃. Bass clef: *p*, quarter note G₃, quarter note A₃, quarter note B₃.

Measure 10: Treble clef: *p*, triplet of eighth notes G₄, A₄, B₄, triplet of eighth notes C₅, B₄, A₄, triplet of eighth notes G₄, F₄, E₄, triplet of eighth notes D₄, C₄, B₃. Bass clef: *p*, quarter note G₃, quarter note A₃, quarter note B₃.

Measure 11: Treble clef: *p*, triplet of eighth notes G₄, A₄, B₄, triplet of eighth notes C₅, B₄, A₄, triplet of eighth notes G₄, F₄, E₄, triplet of eighth notes D₄, C₄, B₃. Bass clef: *p*, quarter note G₃, quarter note A₃, quarter note B₃.

Measure 12: Treble clef: *p*, triplet of eighth notes G₄, A₄, B₄, triplet of eighth notes C₅, B₄, A₄, triplet of eighth notes G₄, F₄, E₄, triplet of eighth notes D₄, C₄, B₃. Bass clef: *p*, quarter note G₃, quarter note A₃, quarter note B₃.

Measure 13: Treble clef: *p*, triplet of eighth notes G₄, A₄, B₄, triplet of eighth notes C₅, B₄, A₄, triplet of eighth notes G₄, F₄, E₄, triplet of eighth notes D₄, C₄, B₃. Bass clef: *p*, quarter note G₃, quarter note A₃, quarter note B₃.

16

19

22

26

29

III

RONDO

Allegro ♩ = 120

Measures 1-6 of the Rondo section. The piece is in 2/4 time with a key signature of three flats (B-flat, E-flat, A-flat). The bass line (left) starts with a piano (*p*) dynamic and features a continuous eighth-note pattern. The piano accompaniment (right) begins in measure 4 with a piano (*p*) dynamic, featuring chords and eighth-note patterns.

7

Measures 7-14 of the Rondo section. The bass line continues its eighth-note pattern. The piano accompaniment features chords and eighth-note patterns, with a crescendo leading into measure 14.

15

Measures 15-22 of the Rondo section. The bass line continues its eighth-note pattern. The piano accompaniment features chords and eighth-note patterns, with dynamics including *f* (forte) and *sf* (sforzando) in measures 18-20.

23

Measures 23-31 of the Rondo section. The bass line continues its eighth-note pattern. The piano accompaniment features chords and eighth-note patterns, with dynamics including *sf* (sforzando) in measures 24-25.

32

Measures 32-39 of the Rondo section. The bass line continues its eighth-note pattern. The piano accompaniment features chords and eighth-note patterns, with dynamics including *p* (piano) and *mf* (mezzo-forte) in measures 32-39.

41

Measures 41-48. The piece is in 3/4 time with a key signature of three flats (B-flat, E-flat, A-flat). The bass line starts with a whole rest, followed by a melodic line in the right hand. Dynamics include *p* (piano) and *mp* (mezzo-piano).

49

Measures 49-56. The right hand features a series of chords and moving lines, while the left hand provides a steady accompaniment. Dynamics include *p* and *mp*.

57

Measures 57-64. This section includes triplets in both hands. Dynamics include *f* (forte) and *f³* (forte triplet).

65

Measures 65-72. The music continues with triplets and chords. Dynamics include *p³* (piano triplet), *p*, *f*, and *mf* (mezzo-forte).

73

Measures 73-80. The right hand has a melodic line with some rests, while the left hand continues with a rhythmic accompaniment. Dynamics include *mp* and *p*.

81

Measures 81-88. The piece concludes with a series of chords and moving lines in both hands. Dynamics include *mf* and *f*.

89

97

98

105

106

113

114

121

122

129

130

137

BASS TROMBONE & PIANO

EMR 20971	MORTIMER, John G.	Winter Days
EMR 8655	MORTIMER, J.G. (Arr.)	La Cucaracha (5)
EMR 8545	MORTIMER, J.G. (Arr.)	Scarborough Fair (5)
EMR 923N	MORTIMER, J.G. (Arr.)	The Beatles (8)
EMR 8522	MORTIMER, J.G. (Arr.)	The Last Rose Of Summer (5)
EMR 22250	MOUREY, Colette	Initiation au Déchiffrage
EMR 18644	MOUREY, Colette	Matines
EMR 22420	MOUREY, Colette (Arr.)	20 Greatest Arias
EMR 22397	MOUREY, Colette (Arr.)	20 Greatest Christmas Hits
EMR 25115	MOUREY, Colette (Arr.)	20 Greatest Gloria Hits Vol.1
EMR 25139	MOUREY, Colette (Arr.)	20 Greatest Gloria Hits Vol.2
EMR 22462	MOUREY, Colette (Arr.)	20 Greatest Marches
EMR 22092	MOUREY, Colette (Arr.)	20 Greatest Meditations
EMR 21585	MOUREY, Colette (Arr.)	20 Greatest Wedding Solos
EMR 24037	MOUREY, Colette (Arr.)	40 Greatest Baroque Hits Vol.1
EMR 24631	MOUREY, Colette (Arr.)	40 Greatest Baroque Hits Vol.2
EMR 25019	MOUREY, Colette (Arr.)	40 Greatest Classic Hits Vol.1
EMR 25043	MOUREY, Colette (Arr.)	40 Greatest Classic Hits Vol.2
EMR 25067	MOUREY, Colette (Arr.)	40 Greatest Classic Hits Vol.3
EMR 25091	MOUREY, Colette (Arr.)	40 Greatest Classic Hits Vol.4
EMR 2108N	MOZART, Wolfgang A.	Adagio
EMR 15016	NAULAIS, Jérôme	La Cueva Del Dragon
EMR 23459	NAULAIS, J. (Arr.)	Il Silenzio
EMR 21323	NORIS, Günter	Beautiful Girl
EMR 23947	NORIS, Günter	Cha Cha - Cuba Libre
EMR 21306	NORIS, Günter	Dreamy Blues
EMR 2283N	NORIS, Günter	El Toro
EMR 23966	NORIS, Günter	Let's Do The Jive
EMR 21340	NORIS, Günter	Ritmo Del Amor
EMR 23985	NORIS, Günter	Samba Ole
EMR 26071	NORIS, Günter	Vamos A La Fiesta
EMR 8589	OLIVER, Julian (Arr.)	Deep River (5)
EMR 25826	ONSLow, George	Andantino
EMR 306N	PEZEL, Johann	Suite de Danses (Sturzenegger)
EMR 304N	PORPORA, N.A.	Sonate As-Dur (Sturzenegger)
EMR 2496	PRYOR, Arthur	Annie Laurie
EMR 30040	PRYOR, Arthur	Love's Enchantment
EMR 4239	PRYOR, Arthur	The Supervisor
EMR 23493	PUCCINI, Giacomo	Nessun Dorma
EMR 2031N	PUCCINI, Giacomo	Nessun Dorma
EMR 303N	PURCELL, Henry	Suite (Sturzenegger)
EMR 23609	RACHMANINOFF, S.	Spring Waters
EMR 23658	RAVEL, Maurice	Habanera
EMR 2029N	RAVEL, Maurice	Pièce en forme de Habanera (Hilgers)
EMR 2170N	RICH / RANDOLPH	Benny Hill (Yackety Sax)
EMR 8655	RICHARDS, Scott (Arr.)	Home On The Range (5)
EMR 266N	RIMSKY-KORSAKOV	The Flight of the Bumble Bee
EMR 4435	ROCHA, Gilles	Ave Maria
EMR 4332	ROCHA, Gilles	Derniers Mots...
EMR 28251	ROCHA, Gilles	Fly or Die
EMR 4332	ROCHA, Gilles	Last Words...
EMR 4332	ROCHA, Gilles	Letzte Worte...
EMR 21289	ROCHA, Gilles	Serenade
EMR 221	SACHSE, Ernst	Concertino in F (Wagenhäuser)
EMR 2174N	SAINT-SAËNS, C.	Romance
EMR 23189	SAINT-SAËNS, C.	The Swan
EMR 2025	SCHNYDER, Daniel	Sonata
EMR 4387	SCHUBERT, Franz	Ave Maria (Oliver)
EMR 6073N	SCHUBERT, Franz	Serenade D 957 N° 4
EMR 25331A	SCHUMANN, Robert	2 Waldszenen
EMR 25443A	SCHUMANN, Robert	4 Lieder
EMR 23208	SCHUMANN, Robert	Dreaming Song
EMR 30288	SCOTT, James	Broadway Rag
EMR 25213A	SCRIABINE, A.	2 Feuilletts d'Album
EMR 8589	SEDLAK, Jan (Arr.)	Kalinka (5)
EMR 8633	SEDLAK, Jan (Arr.)	Shalom (5)
EMR 8677	SEDLAK, Jan (Arr.)	Two Guitars (5)
EMR 293A	SENAILLE, Jean-B.	Andante & Allegro Spirituoso
EMR 2033	SIEBENTHAL, G.	Our Mission
EMR 25359A	SMETANA, Bedrich	2 Waltzes
EMR 8655	STRAUSS, Johann	Emperor Waltz (5)
EMR 8611	STRAUSS, Johann	Radetzky March (5)
EMR 8564	STRAUSS, Johann	Rosen aus dem Süden (5)
EMR 8633	STRAUSS, Johann	Tritsch-Tratsch-Polka (5)
EMR 8633	SUBA, Eduardo (Arr.)	Cielito Lindo (5)
EMR 8589	SUBA, Eduardo (Arr.)	La Paloma (5)
EMR 8611	SUBA, Eduardo (Arr.)	Tico-Tico (5)
EMR 2285N	TAILOR, Norman	El Choclo
EMR 8545	TAILOR, Norman	Inca Dance (5)
EMR 20748	TAILOR, Norman	Keep On Smiling
EMR 2291N	TAILOR, Norman	Sousa Medley
EMR 8522	TAILOR, Norman (Arr.)	Danny Boy (5)
EMR 25265A	TARREGA, Francisco	2 Pieces
EMR 30638	TARTINI, Giuseppe	Concerto in C Major

Bass Trombone & Piano (Fortsetzung - Continued - Suite)

EMR 29994	TCHAIKOVSKY, P.I.	Russian Dance
EMR 20985	TELEMANN, Georg P.	12 Heroic Marches
EMR 21662	TELEMANN, Georg P.	12 Heroic Marches
EMR 30661	TELEMANN, Georg P.	Concerto in C Major
EMR 288N	TELEMANN, Georg P.	Sonata in F minor
EMR 211	TIBOR, Georg	Introduzione - Tema e Variazioni
EMR 23227	TOSELLI, Enrico	Serenada
EMR 23247	TRADITIONAL	Greensleeves
EMR 23268	TRADITIONAL	Londonderry Air
EMR 2290N	TRADITIONAL	O Sole Mio (Richards)
EMR 2293N	TRADITIONAL	O Sole Mio (Saurer)
EMR 22160	VARIOUS	20 Greatest Slow Melodies
EMR 2332	VARIOUS	Baroque Masterpieces
EMR 8522	VARIOUS	Greatest Hits Volume 1 (5)
EMR 8545	VARIOUS	Greatest Hits Volume 2 (5)
EMR 8564	VARIOUS	Greatest Hits Volume 3 (5)
EMR 8589	VARIOUS	Greatest Hits Volume 4 (5)
EMR 8611	VARIOUS	Greatest Hits Volume 5 (5)
EMR 8633	VARIOUS	Greatest Hits Volume 6 (5)
EMR 8655	VARIOUS	Greatest Hits Volume 7 (5)
EMR 8677	VARIOUS	Greatest Hits Volume 8 (5)
EMR 2402	VARIOUS	Sacred Music Volume 1
EMR 8444	VARIOUS	Sacred Music Volume 2
EMR 8482	VARIOUS	Sacred Music Volume 3
EMR 30615	VERACINI, Francesco	Concerto in F Minor
EMR 25184A	VERDI, Giuseppe	2 Chorus Of Gipsies
EMR 19022	VERDI, Giuseppe	Chorus Of Hebrew Slaves
EMR 4382	VERGERE, Cédric	Metabolic
EMR 287A	VIOLA, Anselm	Concerto
EMR 2052N	VIVALDI, Antonio	6 Sonatas
EMR 28740	VIVALDI, Antonio	Concerto in F Major
EMR 28767	VIVALDI, Antonio	Concerto in G Minor
EMR 323N	VIVALDI, Antonio	Sonata N°1 in Bb major
EMR 324N	VIVALDI, Antonio	Sonata N°2 in F major
EMR 325N	VIVALDI, Antonio	Sonata N°3 in A minor
EMR 2049N	VIVALDI, Antonio	Sonata N°4 in Bb major
EMR 2050N	VIVALDI, Antonio	Sonata N°5 in E minor
EMR 2051N	VIVALDI, Antonio	Sonata N°6 in Bb major
EMR 25166A	WAGNER, Richard	2 Arias
EMR 25415A	WEBER, C.M. von	4 Arias
EMR 2296N	WEBER, C.M. von	Romance
EMR 23288	YRADIER, Sebastien	Paloma

BASS TROMBONE & ORGAN

EMR 28713	ALBINONI, Tomaso	Concerto in D Minor
EMR 28686	ALBINONI, Tomaso	Concerto in Eb Major
EMR 28659	ALBINONI, Tomaso	Concerto in G Major
EMR 317N	ALBINONI, Tomaso	Konzert B-Dur
EMR 8444	ANDREWS, D. (Arr.)	The Old Rugged Cross (5)
EMR 2104N	BACH, Johann S.	Chorale Prelude "Ich ruf zu Dir"
EMR 8482	BACH, Johann S.	Lobe den Herrn (5)
EMR 2107N	BACH, Johann S.	Prelude D minor BWV 539 (Hilgers)
EMR 2105N	BACH, Johann S.	Prelude XVII BWV 862 (Hilgers)
EMR 2103N	BACH, Johann S.	Prelude XX BWV 865 (Hilgers)
EMR 2106N	BACH, Johann S.	Prelude XXII BWV 867 (Hilgers)
EMR 21690	BALAY, Guillaume	Andante et Allegretto
EMR 21733	BALAY, Guillaume	Prélude et Ballade
EMR 25387A	BARTOK, Bela	3 Romanian Folk Dances
EMR 28790	BEETHOVEN, L.v.	Romance
EMR 30569	BEETHOVEN, L.v.	Schottisches Lied
EMR 2884	BEETHOVEN, L.v.	Sonatine
EMR 2890A	BOND, Capel	Concerto N° 6 in B
EMR 25658	BRAHMS, Johannes	Albumblatt
EMR 25471A	CAPLET, André	Adagio
EMR 25770	CARULLI, Ferdinando	Andante Affettuoso
EMR 25303A	CHOPIN, Frédéric	2 Préludes
EMR 291A	CORRETTE, Michel	Sonata in D minor
EMR 8500	CRÜGER, Johann	Nun danket alle Gott (5)
EMR 25239A	CZERNY, Carl	2 Marches
EMR 2039F	DELLA BELLA, D.	Sonata in C major
EMR 30712	DONIZETTI, Gaetano	Una furtiva lagrima
EMR 305N	FRANCK, Melchior	Suite de Danses (Sturzenegger)
EMR 2402	FRANZ, Ignaz	Grosser Gott, wir loben Dich (5)
EMR 25602	GADE, Niels W.	Album Leaves N°1
EMR 2145N	GALLIARD, J.E.	6 Sonatas
EMR 2139N	GALLIARD, J.E.	Sonata N° 1 in A minor
EMR 2140N	GALLIARD, J.E.	Sonata N° 2 in G major
EMR 2141N	GALLIARD, J.E.	Sonata N° 3 in F major
EMR 2142N	GALLIARD, J.E.	Sonata N° 4 in E minor
EMR 2143N	GALLIARD, J.E.	Sonata N° 5 in D minor
EMR 2144N	GALLIARD, J.E.	Sonata N° 6 in C major
EMR 28817	GLINKA, Mikhail	Reiselied
EMR 25546	GOUNOD, Charles	Air des Bijoux / Choeur des Soldats
EMR 30592	HÄNDEL, Georg F.	Arie