

# Concerto B $\flat$ Major

(1741)

Bass Recorder & Organ

Arr.: Martina Reichert

**Johann Gottfried Walther**

EMR 44538

**Print & Listen**  
**Drucken & Anhören**  
**Imprimer & Ecouter**



**www.reift.ch**



**EDITIONS MARC REIFT**

Route du Golf 150 • CH-3963 Crans-Montana (Switzerland)

Tel. +41 (0) 27 483 12 00 • Fax +41 (0) 27 483 42 43 • E-Mail : [info@reift.ch](mailto:info@reift.ch) • [www.reift.ch](http://www.reift.ch)

BASS  
RECORDER

# Concerto B $\flat$ Major

(1741)

Johann Gottfried Walther

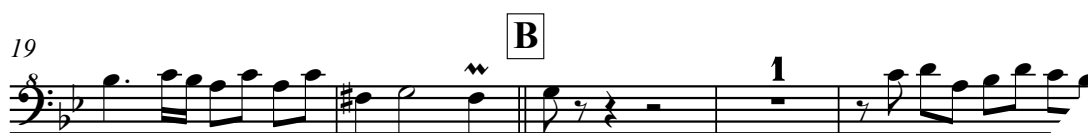
Arr.: Martina Reichert

Preludio. Adagio ( $\text{♩} = 60$ )

  
Photocopying  
is illegal!



(rit.) **A** Allegro ( $\text{♩} = 112$ )



Ritornello. Vivace ( $\text{♩} = 100$ )



EMR 44538

© COPYRIGHT BY EDITIONS MARC REIFT CH-3963 CRANS-MONTANA (SV)  
ALL RIGHTS RESERVED - INTERNATIONAL COPYRIGHT SEC

# Concerto B $\flat$ Major

(1741)

Johann Gottfried Walther

Arr.: Martina Reichert



## Preludio. Adagio ( $\text{♩} = 60$ )

Bass Recorder

mf

tr

Organ

mf

Manual

Ped.

6

(rit.)

**A** Allegro ( $\text{♩} = 112$ )

f

11

EMR 44538

© COPYRIGHT BY EDITIONS MARC REIFT CH-3963 CRANS-MONTANA (SW)  
ALL RIGHTS RESERVED - INTERNATIONAL COPYRIGHT SECUR

**Largo (♩ = 58)**

*mp*  
*Manual*

5

11

16

22

28

## Aria. Largo (♩ = 56)

Measures 1-3 of the Aria. Largo section. The music is in 12/8 time, key of B-flat major. The tempo is marked 'Aria. Largo' with a quarter note equal to 56 beats per minute. The dynamic is marked 'mf' (mezzo-forte). The score consists of three staves: a single bass staff and a grand staff (treble and bass). The bass staff begins with a whole rest, followed by a melodic line starting on G4. The grand staff begins with a whole rest, followed by a piano introduction in the right hand and a bass line in the left hand.

Measures 4-7 of the Aria. Largo section. The music continues with a melodic line in the bass staff and piano accompaniment in the grand staff. The piano part features a steady eighth-note bass line and a more active right hand with various intervals and a trill in measure 7.

Measures 8-11 of the Aria. Largo section. Measure 8 is marked with a box containing the letter 'E'. The music continues with a melodic line in the bass staff and piano accompaniment in the grand staff. The piano part features a steady eighth-note bass line and a more active right hand with various intervals and a trill in measure 11.

Measures 12-15 of the Aria. Largo section. The music continues with a melodic line in the bass staff and piano accompaniment in the grand staff. The piano part features a steady eighth-note bass line and a more active right hand with various intervals and a trill in measure 15.

Measures 16-19 of the Aria. Largo section. Measure 16 is marked with a box containing the letter 'F'. The music continues with a melodic line in the bass staff and piano accompaniment in the grand staff. The piano part features a steady eighth-note bass line and a more active right hand with various intervals and a trill in measure 19.

**TENOR RECORDER & PIANO**

EMR 21449	BLAZHEVICH, Vladislav	Concerto N°8
EMR 21469	BLAZHEVICH, Vladislav	Concerto N°9
EMR 21489	BLAZHEVICH, Vladislav	Concerto N°10
EMR 25636	BRAHMS, Johannes	Albumblatt
EMR 25460A	CAPLET, André	Adagio
EMR 25748	CARULLI, Ferdinando	Andante Affettuoso
EMR 25292A	CHOPIN, Frédéric	2 Préludes
EMR 25228A	CZERNY, Carl	2 Marches
EMR 21984	CZERNY, Carl	Grande Marche
EMR 30701	DONIZETTI, Gaetano	Una furtiva lagrima
EMR 25580	GADE, Niels W.	Album Leaves N°1
EMR 22385	GERSHWIN, George	Gershwin 20 Greatest Hits
EMR 28807	GLINKA, Mikhail	Reiselied
EMR 25524	GOUNOD, Charles	Air des Bijoux / Chœur des Soldats
EMR 30506	HAENDEL, Georg F.	Concerto in B Minor
EMR 30532	HAENDEL, Georg F.	Larghetto
EMR 30232	JOPLIN, Scott	The Sycamore
EMR 25692	LALO, Edouard	Andante
EMR 25488A	MERTZ, Johann K.	Adagio
EMR 22261	MOUREY, Colette	Initiation au Déchiffrage
EMR 22431	MOUREY, Colette (Arr.)	20 Greatest Arias
EMR 22408	MOUREY, Colette (Arr.)	20 Greatest Christmas Hits
EMR 25098	MOUREY, Colette (Arr.)	20 Greatest Gloria Hits Vol.1
EMR 25122	MOUREY, Colette (Arr.)	20 Greatest Gloria Hits Vol.2
EMR 22473	MOUREY, Colette (Arr.)	20 Greatest Marches
EMR 22102	MOUREY, Colette (Arr.)	20 Greatest Meditations
EMR 21430	MOUREY, Colette (Arr.)	20 Greatest Wedding Solos
EMR 24044	MOUREY, Colette (Arr.)	40 Greatest Baroque Hits Vol.1
EMR 24638	MOUREY, Colette (Arr.)	40 Greatest Baroque Hits Vol.2
EMR 25002	MOUREY, Colette (Arr.)	40 Greatest Classic Hits Vol.1
EMR 25026	MOUREY, Colette (Arr.)	40 Greatest Classic Hits Vol.2
EMR 25050	MOUREY, Colette (Arr.)	40 Greatest Classic Hits Vol.3
EMR 25074	MOUREY, Colette (Arr.)	40 Greatest Classic Hits Vol.4
EMR 25804	ONSLow, George	Andantino
EMR 30032	PRYOR, Arthur	Love's Enchantment
EMR 25320A	SCHUMANN, Robert	2 Waldszenen
EMR 25432A	SCHUMANN, Robert	4 Lieder
EMR 30277	SCOTT, James	Broadway Rag
EMR 25202A	SCRIABINE, Alexander	2 Feuilletts d'Album
EMR 25348A	SMETANA, Bedrich	2 Waltzes
EMR 25254A	TARREGA, Francisco	2 Pieces
EMR 22171	VARIOUS	20 Greatest Slow Melodies
EMR 25173A	VERDI, Giuseppe	2 Chorus Of Gipsies
EMR 28730	VIVALDI, Antonio	Concerto in D Major
EMR 28757	VIVALDI, Antonio	Concerto in E Minor
EMR 25150A	WAGNER, Richard	2 Arias
EMR 25404A	WEBER, Carl Maria v.	4 Arias

**TENOR RECORDER & ORGAN**

EMR 28703	ALBINONI, Tomaso	Concerto in C Major
EMR 28676	ALBINONI, Tomaso	Concerto in D Minor
EMR 28649	ALBINONI, Tomaso	Concerto in G Major
EMR 25376A	BARTOK, Bela	3 Romanian Folk Dances
EMR 30559	BEETHOVEN, Ludwig v.	Schottisches Lied
EMR 25636	BRAHMS, Johannes	Albumblatt
EMR 25460A	CAPLET, André	Adagio
EMR 25748	CARULLI, Ferdinando	Andante Affettuoso
EMR 25292A	CHOPIN, Frédéric	2 Préludes
EMR 25228A	CZERNY, Carl	2 Marches
EMR 30701	DONIZETTI, Gaetano	Una furtiva lagrima
EMR 25580	GADE, Niels W.	Album Leaves N°1
EMR 28807	GLINKA, Mikhail	Reiselied
EMR 25524	GOUNOD, Charles	Air des Bijoux / Chœur des Soldats
EMR 30506	HAENDEL, Georg F.	Concerto in B Minor
EMR 30532	HAENDEL, Georg F.	Larghetto
EMR 25692	LALO, Edouard	Andante
EMR 25488A	MERTZ, Johann K.	Adagio
EMR 22431	MOUREY, Colette (Arr.)	20 Greatest Arias
EMR 25098	MOUREY, Colette (Arr.)	20 Greatest Gloria Hits Vol.1
EMR 25122	MOUREY, Colette (Arr.)	20 Greatest Gloria Hits Vol.2
EMR 24044	MOUREY, Colette (Arr.)	40 Greatest Baroque Hits Vol.1
EMR 24638	MOUREY, Colette (Arr.)	40 Greatest Baroque Hits Vol.2
EMR 25002	MOUREY, Colette (Arr.)	40 Greatest Classic Hits Vol.1
EMR 25026	MOUREY, Colette (Arr.)	40 Greatest Classic Hits Vol.2
EMR 25050	MOUREY, Colette (Arr.)	40 Greatest Classic Hits Vol.3
EMR 25074	MOUREY, Colette (Arr.)	40 Greatest Classic Hits Vol.4
EMR 25804	ONSLow, George	Andantino
EMR 25320A	SCHUMANN, Robert	2 Waldszenen
EMR 25432A	SCHUMANN, Robert	4 Lieder
EMR 25202A	SCRIABINE, Alexander	2 Feuilletts d'Album
EMR 25348A	SMETANA, Bedrich	2 Waltzes
EMR 25254A	TARREGA, Francisco	2 Pieces
EMR 25173A	VERDI, Giuseppe	2 Chorus Of Gipsies
EMR 28730	VIVALDI, Antonio	Concerto in D Major

**Tenor Recorder & Organ (Fortsetzung - Continued - Suite)**

EMR 28757	VIVALDI, Antonio	Concerto in E Minor
EMR 25150A	WAGNER, Richard	2 Arias
EMR 25404A	WEBER, Carl Maria v.	4 Arias

**TENOR RECORDER & GUITAR**

EMR 25376B	BARTOK, Bela	3 Romanian Folk Dances
EMR 25637	BRAHMS, Johannes	Albumblatt
EMR 25460B	CAPLET, André	Adagio
EMR 25749	CARULLI, Ferdinando	Andante Affettuoso
EMR 25292B	CHOPIN, Frédéric	2 Préludes
EMR 25228B	CZERNY, Carl	2 Marches
EMR 25581	GADE, Niels W.	Album Leaves N°1
EMR 25525	GOUNOD, Charles	Air des Bijoux / Chœur des Soldats
EMR 25693	LALO, Edouard	Andante
EMR 25488B	MERTZ, Johann K.	Adagio
EMR 25805	ONSLow, George	Andantino
EMR 25320B	SCHUMANN, Robert	2 Waldszenen
EMR 25432B	SCHUMANN, Robert	4 Lieder
EMR 25202B	SCRIABINE, Alexander	2 Feuilletts d'Album
EMR 25348B	SMETANA, Bedrich	2 Waltzes
EMR 25254B	TARREGA, Francisco	2 Pieces
EMR 25173B	VERDI, Giuseppe	2 Chorus Of Gipsies
EMR 25150B	WAGNER, Richard	2 Arias
EMR 25404B	WEBER, Carl Maria v.	4 Arias

**TENOR RECORDER, MEZZO SOPRANO & PIANO**

EMR 22494	MOUREY, Colette (Arr.)	20 Greatest Duets
-----------	------------------------	-------------------

**TENOR RECORDER, MEZZO SOPRANO & PIANO (ORGAN)**

EMR 24645	MOUREY, Colette (Arr.)	20 Greatest Christmas Songs Vol.1
EMR 24646	MOUREY, Colette (Arr.)	20 Greatest Christmas Songs Vol.2

**TENOR RECORDER, BARITONE (VOICE) & PIANO (ORGAN)**

EMR 24671	MOUREY, Colette (Arr.)	20 Greatest Christmas Songs Vol.1
EMR 24672	MOUREY, Colette (Arr.)	20 Greatest Christmas Songs Vol.2

**BASS RECORDER & PIANO**

EMR 28650	ALBINONI, Tomaso	Concerto in Bb Major
EMR 28704	ALBINONI, Tomaso	Concerto in D Minor
EMR 28677	ALBINONI, Tomaso	Concerto in F Major
EMR 21200	BALAY, Guillaume	Andante et Allegretto
EMR 21720	BALAY, Guillaume	Prélude et Ballade
EMR 25377A	BARTOK, Bela	3 Romanian Folk Dances
EMR 30560	BEETHOVEN, Ludwig v.	Schottisches Lied
EMR 21153	BLAZHEVICH, Vladislav	Concerto N°1
EMR 21173	BLAZHEVICH, Vladislav	Concerto N°2
EMR 21193	BLAZHEVICH, Vladislav	Concerto N°3
EMR 21376	BLAZHEVICH, Vladislav	Concerto N°4
EMR 21397	BLAZHEVICH, Vladislav	Concerto N°5
EMR 21451	BLAZHEVICH, Vladislav	Concerto N°7
EMR 21471	BLAZHEVICH, Vladislav	Concerto N°8
EMR 21491	BLAZHEVICH, Vladislav	Concerto N°9
EMR 21542	BLAZHEVICH, Vladislav	Concerto N°10
EMR 25638	BRAHMS, Johannes	Albumblatt
EMR 25461A	CAPLET, André	Adagio
EMR 25750	CARULLI, Ferdinando	Andante Affettuoso
EMR 25293A	CHOPIN, Frédéric	2 Préludes
EMR 25229A	CZERNY, Carl	2 Marches
EMR 21985	CZERNY, Carl	Grande Marche
EMR 30702	DONIZETTI, Gaetano	Una furtiva lagrima
EMR 25582	GADE, Niels W.	Album Leaves N°1
EMR 22386	GERSHWIN, George	Gershwin 20 Greatest Hits
EMR 28808	GLINKA, Mikhail	Reiselied
EMR 25526	GOUNOD, Charles	Air des Bijoux / Chœur des Soldats
EMR 30533	HAENDEL, Georg F.	Larghetto
EMR 30233	JOPLIN, Scott	The Sycamore
EMR 25694	LALO, Edouard	Andante
EMR 25489A	MERTZ, Johann K.	Adagio
EMR 22262	MOUREY, Colette	Initiation au Déchiffrage
EMR 22432	MOUREY, Colette (Arr.)	20 Greatest Arias
EMR 22409	MOUREY, Colette (Arr.)	20 Greatest Christmas Hits
EMR 25099	MOUREY, Colette (Arr.)	20 Greatest Gloria Hits Vol.1
EMR 25123	MOUREY, Colette (Arr.)	20 Greatest Gloria Hits Vol.2
EMR 22474	MOUREY, Colette (Arr.)	20 Greatest Marches
EMR 22104	MOUREY, Colette (Arr.)	20 Greatest Meditations
EMR 21431	MOUREY, Colette (Arr.)	20 Greatest Wedding Solos
EMR 24045	MOUREY, Colette (Arr.)	40 Greatest Baroque Hits Vol.1
EMR 24639	MOUREY, Colette (Arr.)	40 Greatest Baroque Hits Vol.2
EMR 25003	MOUREY, Colette (Arr.)	40 Greatest Classic Hits Vol.1
EMR 25027	MOUREY, Colette (Arr.)	40 Greatest Classic Hits Vol.2
EMR 25051	MOUREY, Colette (Arr.)	40 Greatest Classic Hits Vol.3
EMR 25075	MOUREY, Colette (Arr.)	40 Greatest Classic Hits Vol.4
EMR 25806	ONSLow, George	Andantino