

# Wolgalied

*Volga Song*

Brass Band

Arr.: Tomáš Molčan

Adapt.: Bertrand Moren

**Franz Lehár**

EMR 32970

- |   |                                    |   |  |
|---|------------------------------------|---|--|
| 1 | Full Score                         | 2 | 1 <sup>st</sup> Trombone $\text{♩} + \text{♭}$ |
| 1 | E $\flat$ Cornet                   | 2 | 2 <sup>nd</sup> Trombone $\text{♩} + \text{♭}$ |
| 3 | Solo B $\flat$ Cornet I            | 1 | Bass Trombone $\text{♩} + \text{♭}$            |
| 3 | Solo B $\flat$ Cornet II           | 2 | B $\flat$ Euphonium                            |
| 1 | Repiano B $\flat$ Cornet           | 3 | E $\flat$ Bass                                 |
| 3 | 2 <sup>nd</sup> B $\flat$ Cornet   | 3 | B $\flat$ Bass                                 |
| 3 | 3 <sup>rd</sup> B $\flat$ Cornet   | 1 | Timpani  |
| 1 | B $\flat$ Flugelhorn               | 1 | Glockenspiel                                   |
| 2 | Solo E $\flat$ Horn                | 1 | Cymbals  |
| 2 | 1 <sup>st</sup> E $\flat$ Horn     | 1 | Triangle                                       |
| 2 | 2 <sup>nd</sup> E $\flat$ Horn     |   |  |
| 2 | 1 <sup>st</sup> B $\flat$ Baritone |   |  |
| 2 | 2 <sup>nd</sup> B $\flat$ Baritone |   |  |

**Print & Listen**  
**Drucken & Anhören**  
**Imprimer & Ecouter**



**www.reift.ch**



**EDITIONS MARC REIFT**

Route du Golf 150 • CH-3963 Crans-Montana (Switzerland)  
Tel. +41 (0) 27 483 12 00 • E-Mail : [info@reift.ch](mailto:info@reift.ch) • [www.reift.ch](http://www.reift.ch)

# DISCOGRAPHY



## Happy New Year

Track N°	Titel / Title (Komponist / Composer)	Time	N° EMR Blasorchester Concert Band	N° EMR Brass Band
1	<b>Furioso Polka</b> (J. Strauss II)	2'22	EMR 12778	EMR 32633
2	<b>Gaité Parisienne</b> (Offenbach)	2'20	EMR 12973	EMR 32814
3	<b>Ohne Sorgen Polka</b> (J. Strauss)	2'02	EMR 12996	EMR 32679
4	<b>Russischer Marsch</b> (J. Strauss)	3'48	EMR 12997	EMR 32808
5	<b>Wolgalied</b> (Lehár)	4'37	EMR 42193	EMR 32970
6	<b>Cachucha Galopp</b> (J. Strauss)	2'25	EMR 12998	EMR 32675
7	<b>Freiheits Marsch</b> (J. Strauss)	2'20	EMR 12999	EMR 32819
8	<b>Indianer Galopp</b> (J. Strauss)	2'27	EMR 42007	EMR 32680
9	<b>Dein ist mein ganzes Herz</b> (Lehár)	3'02	EMR 42197	EMR 32971
10	<b>Der Karneval in Paris</b> (J. Strauss)	2'50	EMR 42017	EMR 32597
11	<b>Fest Marsch</b> (J. Strauss)	3'13	EMR 42049	EMR 32815
12	<b>Galop Prestissimo</b> (Waldteufel)	2'58	EMR 42063	EMR 32690
13	<b>Winterlust</b> (Josef Strauss)	2'38	EMR 42169	EMR 32817
14	<b>Wein, Weib und Gesang</b> (J. Strauss)	3'12	EMR 42184	EMR 32972
15	<b>Mit Chic</b> (E. Strauss)	2'16	EMR 42192	EMR 32798
16	<b>Mit Dampf</b> (E. Strauss)	3'25	EMR 42215	EMR 32973

**Zu bestellen bei • A commander chez • To be ordered from:**



# Wolgalied

## Volga Song

Franz Lehár

Arr.: Tomáš Molčan

Adapt.: Bertrand Moren

1 2 3 4 **A** 5 6 7 8 9

Moderato (♩ = 72) rit. L'istesso tempo (♩ = 72)

E♭ Cornet

Solo B♭ Cornet I

Solo B♭ Cornet II

Repiano B♭ Cornet

2nd B♭ Cornet

3rd B♭ Cornet

B♭ Flugel Horn

Solo E♭ Horn

1st E♭ Horn

2nd E♭ Horn

1st B♭ Baritone

2nd B♭ Baritone

1st B♭ Trombone

2nd B♭ Trombone

Bass Trombone

B♭ Euphonium

E♭ Bass

B♭ Bass

Timpani

Glockenspiel

Cymbals

Triangle

EMR 32970

rit. **a tempo**

Eb Cnt. *p* *mp* *mf* *mp* *f* *p* *mf*  
 Solo Cnt. I *p* *mp* *mf* *mp* *f* *p* *mf*  
 Solo Cnt. II *p* *mp* *mf* *mp* *f* *p* *mf*  
 Rep. Cnt. *mf* *p sub.*  
 2nd Cnt. *mf* *p sub.*  
 3rd Cnt. *mf* *p sub.*  
 Flug. *p* *mp* *mf* *mp* *f* *p* *mf* *p sub.*  
 Solo Hn. *p* *mp* *mf* *mp* *f* *p*  
 1st Hn. *p* *mp* *mf* *mp* *f* *p*  
 2nd Hn. *p* *mp* *mf* *mp* *f* *p*  
 1st Bar. *p* *p* *mp* *mf* *mp* *f* *p* *mp* *pp sub.* *mp sub.*  
 2nd Bar. *p* *p* *mp* *mf* *mp* *f* *p* *mp* *pp sub.* *mp sub.*  
 1st Tbn. *p* *mp* *mf* *mp* *f* *p* *mp* *pp sub.* *mp sub.*  
 2nd Tbn. *p* *mp* *mf* *mp* *f* *p* *mp* *pp sub.* *mp sub.*  
 B. Tbn. *p* *mp* *mf* *mp* *f* *p* *mp* *pp sub.* *mp sub.*  
 Euph. *p* *mp* *mf* *mp* *f* *p* *mp* *pp sub.* *mp sub.*  
 Eb Bass *pp* *p* *mp* *p* *f* *mp sempre* *pp sub.* *mp sub.*  
 Bb Bass *pp* *p* *mp* *p* *f* *mp sempre* *pp sub.* *mp sub.*  
 Timp. *pp* *p* *mp* *p* *f* *p*  
 Glock.  
 Cym.  
 Tri. *p* *pp* *mp*

**rall.** **a tempo** **molto rit.**

E♭ Cnt. *pp*

Solo Cnt.I *f* *p* *mf* *f*

Solo Cnt.II *f* *p* *mf* *f*

Rep.Cnt. *pp*

2nd Cnt. *mf* *poco f*

3rd Cnt. *mf* *poco f*

Flug. *pp*

Solo Hn. *mf* *f*

1st Hn. *mf* *f*

2nd Hn. *mf* *poco f*

1st Bar. *mf* *p* *mf* *f*

2nd Bar. *mf* *p* *mf* *poco f*

1st Tbn. *mf* *pp* *mf* *f*

2nd Tbn. *mf* *pp* *mf* *poco f*

B.Tbn. *mf* *pp* *mf* *f*

Euph. *mf* *p* *mf* *f*

E♭ Bass *mf* *pp* *mf*

B♭ Bass *mf* *pp* *mf*

Timp.

Glock.

Cym. *Sus.Cym.* *mf*

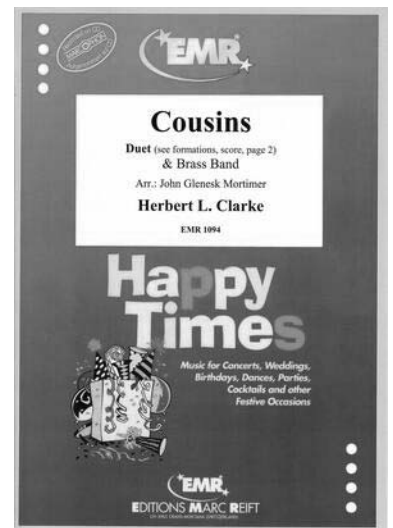
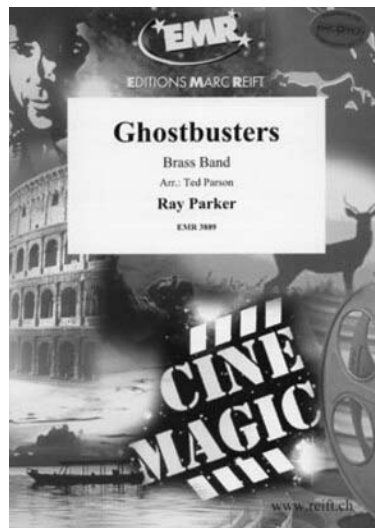
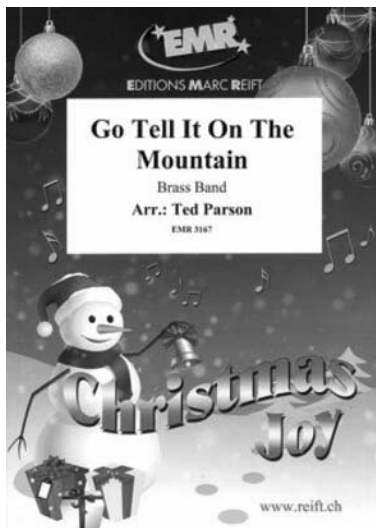
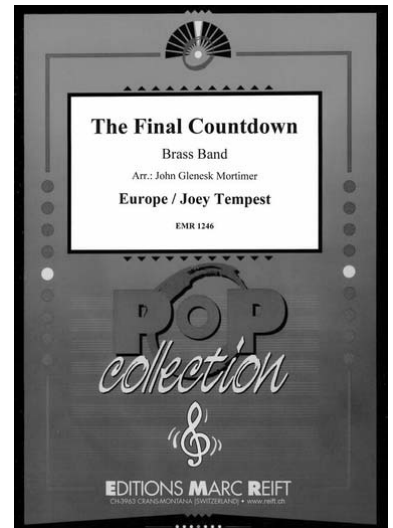
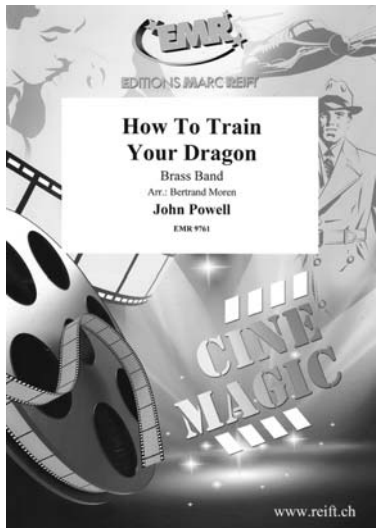
Tri. *mf*

**D**

31 32 33 34 35 36 37 38 39 40 41 42 43 44 45 46  
a tempo pesante a tempo rall. a tempo rall.

Eb Cnt. *mp* *pp* *p*  
 Solo Cnt. I *pp* *mp* *p* *p*  
 Solo Cnt. II *pp* *mp* *p* *p*  
 Rep. Cnt. *mp* *pp* *pp* *mp* *p*  
 2nd Cnt. *pp* *pp* *mp* *p*  
 3rd Cnt. *pp* *pp* *mp* *p*  
 Flug. *mp* *pp* *p* *mp*  
 Solo Hn. *pp* *p* *p* *mp* *pp*  
 1st Hn. *pp* *p* *p* *mp*  
 2nd Hn. *pp* *p*  
 1st Bar. *pp* *mp* *pp* *pp* *mp* *mp sub.* *f*  
 2nd Bar. *pp* *mp* *pp* *pp* *mp* *mp sub.* *f*  
 1st Tbn. *pp* *p* *mf*  
 2nd Tbn. *pp* *p* *mf*  
 B. Tbn. *pp* *p* *mf*  
 Euph. *pp* *mp* *pp* *pp* *mp* *mp sub.* *f*  
 Eb Bass *pp* *mp* *pp* *mp* *p* *mf*  
 Bb Bass *pp* *mp* *pp* *mp* *p*  
 Timp.  
 Glock.  
 Cym.  
 Tri.

# Collection Brass Band



**Discover all our scores for Brass Band**

**Entdecken Sie alle unsere Noten für Brass Band**

**Découvrez toutes nos partitions pour Brass Band**

**SCAN  
ME** ➔



*Use the filters to refine your search and find for example the style of your choice!*

*Nutzen Sie die Filter, um Ihre Suche zu verfeinern und zum Beispiel den Stil Ihrer Wahl zu finden!*

*Utilisez les filtres pour affiner votre recherche et trouver par exemple le style de votre choix!*