

Le Gendarme Se Marie

avec Louis de Funès

Brass Band

Arr.: Jirka Kadlec

Adapt.: Bertrand Moren

Raymond Lefèvre

EMR 32028

- | | | | |
|---|------------------------------------|---|---|
| 1 | Full Score | 2 | 1 st Trombone $\text{tr} + \text{b}$: |
| 1 | E \flat Cornet | 2 | 2 nd Trombone $\text{tr} + \text{b}$: |
| 3 | Solo B \flat Cornet I | 1 | Bass Trombone $\text{tr} + \text{b}$: |
| 3 | Solo B \flat Cornet II | 2 | B \flat Euphonium |
| 1 | Repiano B \flat Cornet | 3 | E \flat Bass |
| 3 | 2 nd B \flat Cornet | 3 | B \flat Bass |
| 3 | 3 rd B \flat Cornet | 1 | Piano / Keyboard (<i>optional</i>) |
| 1 | B \flat Flugelhorn | 1 | Electric Guitar (<i>optional</i>) |
| 2 | Solo E \flat Horn | 1 | Bass Guitar (<i>optional</i>) |
| 2 | 1 st E \flat Horn | 1 | Tambourine |
| 2 | 2 nd E \flat Horn | 1 | Congas |
| 2 | 1 st B \flat Baritone | 1 | Drums |
| 2 | 2 nd B \flat Baritone | | |

Print & Listen
Drucken & Anhören
Imprimer & Ecouter



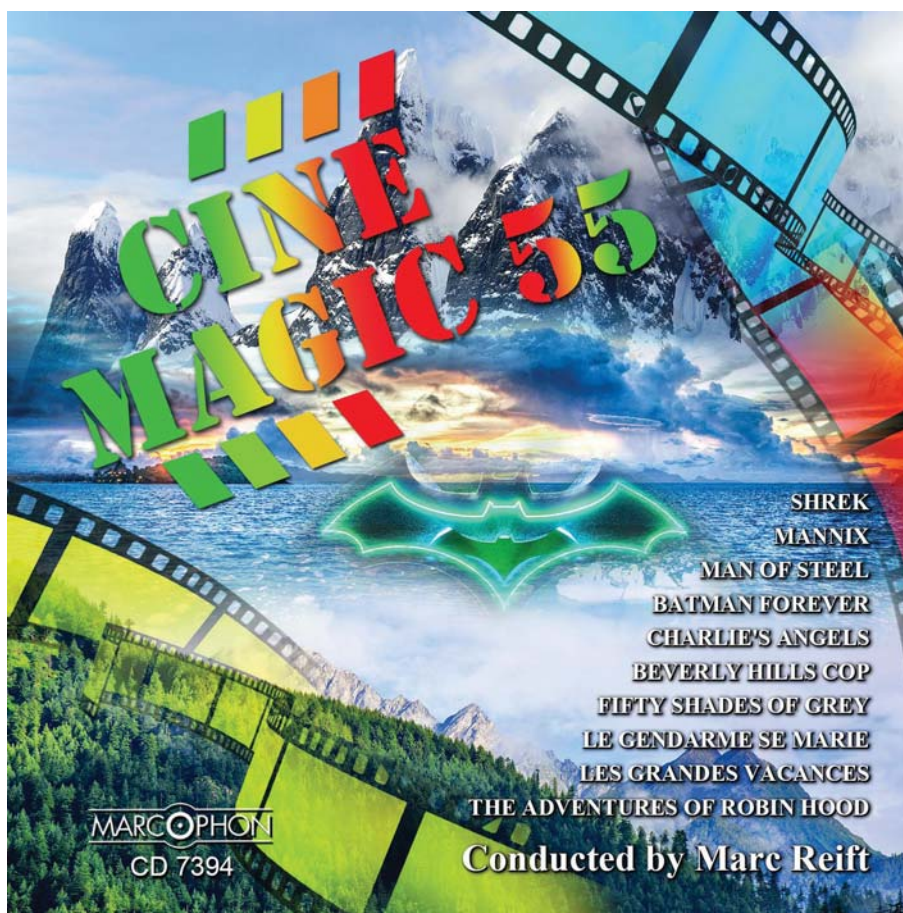
www.reift.ch



EDITIONS MARC REIFT

Route du Golf 150 • CH-3963 Crans-Montana (Switzerland)
Tel. +41 (0) 27 483 12 00 • E-Mail : info@reift.ch • www.reift.ch

DISCOGRAPHY



Cinemagic 55

Track N°	Titel / Title (Komponist / Composer)	Time	N° EMR Blasorchester Concert Band	N° EMR Brass Band
1	Le Gendarme Se Marie (Lefèvre)	2'48	EMR 12333	EMR 32028
2	Man Of Steel (Zimmer)	4'19	EMR 12428	EMR 32029
3	Beverly Hills Cop (Faltermeyer)	3'01	EMR 12377A	EMR 32030
4	Love Me Like You Do (Martin / Kotecha)	3'31	EMR 12354A	EMR 32031
5	The Adventures Of Robin Hood (Korngold)	8'19	EMR 12412	EMR 32032
6	Shrek (Gregson-Williams / Powell)	10'31	EMR 12415	EMR 32033
7	Mannix (Schifrin)	3'18	EMR 12269	EMR 32034
8	Batman Forever (Elliot Goldenthal)	7'06	EMR 12430	EMR 32035
9	Charlie's Angels (Elliott / Ferguson)	2'44	EMR 12433A	EMR 32036
10	Les Grandes Vacances (Lefèvre)	3'01	EMR 12419	EMR 32037

Zu bestellen bei • A commander chez • To be ordered from:



Le Gendarme Se Marie

Raymond Lefèvre

avec Louis de Funès

Arr.: Jirka Kadlec

Adapt.: Bertrand Moren

♩ = 160

1

2

3

4

A

5

6

Eb Cornet
 Solo Bb Cornet I
 Solo Bb Cornet II
 Repiano Bb Cornet
 2nd Bb Cornet
 3rd Bb Cornet
 Bb Flugel Horn
 Solo Eb Horn
 1st Eb Horn
 2nd Eb Horn
 1st Bb Baritone
 2nd Bb Baritone
 1st Bb Trombone
 2nd Bb Trombone
 Bass Trombone
 Bb Euphonium
 Eb Bass
 Bb Bass
 Piano / Keyboard (optional)
 Electric Guitar (optional)
 Bass Guitar (optional)
 Tambourine
 Congas
 Drums

EMR 32028

© AVEC L'AIMABLE AUTORISATION DE RAYMOND LEFEVRE

© COPYRIGHT BY EDITIONS MARC REIFT CH-3963 CRANS-MONTANA (SWITZERLAND)

ALL RIGHTS RESERVED - INTERNATIONAL COPYRIGHT SECURED

Eb Cnt.
 Solo Cnt. I
 Solo Cnt. II
 Rep. Cnt.
 2nd Cnt.
 3rd Cnt.
 Flug.
 Solo Hn.
 1st Hn.
 2nd Hn.
 1st Bar.
 2nd Bar.
 1st Tbn.
 2nd Tbn.
 B. Tbn.
 Euph.
 Eb Bass
 Bb Bass
 Pno./Kbd.
 E. Gtr.
 B. Gtr.
 Tamb.
 Cong.
 Dr.

Chords:
 Gm D7(sus4)/G Gm Dm Gm Dm Eb F Bb Bb(sus4) Bb Eb F Bb Eb F Bb Bb F7(sus4) Bb F7(omit3)

Performance markings: *cresc.*, *f*, *mf*, *BREAK*

Eb Cnt.
 Solo Cnt. I
 Solo Cnt. II
 Rep. Cnt.
 2nd Cnt.
 3rd Cnt.
 Flug.
 Solo Hn.
 1st Hn.
 2nd Hn.
 1st Bar.
 2nd Bar.
 1st Tbn.
 2nd Tbn.
 B. Tbn.
 Euph.
 Eb Bass
 Bb Bass
 Pno./Kbd.
 E. Gtr.
 B. Gtr.
 Tamb.
 Cong.
 Dr.

F(omit3) Bb F Gm D7(sus4)/G Gm Dm Gm Dm Eb F Bb Bb(sus4) Bb Eb F D
 cresc. f fp p f fp p f fp p

(2) (3) (4) (5) (6) (7) (8)
 f p f
 BREAK



21

22

23

24

25

26

27

28

Eb Cnt. *f* *mf < f*
 Solo Cnt. I *f* *fp*
 Solo Cnt. II *f* *fp*
 Rep. Cnt. *f* *mf < f*
 2nd Cnt. *f* *fp*
 3rd Cnt. *f* *fp*
 Flug. *f* *mf < f*
 Solo Hn. *f* *mf < f*
 1st Hn. *f* *mf < f*
 2nd Hn. *f* *mf < f*
 1st Bar. *f* *mf < f*
 2nd Bar. *f* *mf < f*
 1st Tbn. *f* *fp*
 2nd Tbn. *f* *fp*
 B. Tbn. *f* *fp*
 Euph. *f* *mf < f*
 Eb Bass *f* *fp*
 Bb Bass *f* *fp*
 Pno./Kbd. *f* *fp*
 E. Gtr. *f* *fp*
 B. Gtr. *f* *fp*
 Tamb. *f*
 Cong. *f* (2) 2 (3) 2 (4) 2 *p*
 Dr. *f* (2) (3) (4) (5) (6) (7) (8) *p*

G C C C(add9) C Em7 C G F F F(6b5) Am Em Dm7 G C C C(add9) C Em7 C G F Am Dm7
 G C Em7 C G F F(6b5) Am Em Dm7 G C Em7 C G F Am Dm7

Eb Cnt. *mf* *cresc.*
 Solo Cnt. I *f* *fp*
 Solo Cnt. II *f* *fp*
 Rep. Cnt. *mf* *cresc.*
 2nd Cnt. *f* *fp*
 3rd Cnt. *f* *fp*
 Flug. *mf* *cresc.*
 Solo Hn. *mf* *cresc.*
 1st Hn. *mf* *cresc.*
 2nd Hn. *mf* *cresc.*
 1st Bar. *mf* *cresc.*
 2nd Bar. *mf* *cresc.*
 1st Tbn. *f* *Soli* *fp*
 2nd Tbn. *f* *Soli* *fp*
 B. Tbn. *f* *Soli* *fp*
 Euph. *f*
 Eb Bass *f* *fp*
 Bb Bass *f* *fp*
 Pno./Kbd. *mf* *cresc.* *fp*
 E. Gtr. *mf* *fp*
 B. Gtr. *f* *fp*
 Tamb. *f* (2) (3) (4) (5) (6) (7) *fp*
 Cong. *f* (2) (3) (4) (5) (6) (7)
 Dr. *f* (2) (3) (4) (5) (6) (7)

Eb Cnt. *p* *f*
 Solo Cnt. I *f*
 Solo Cnt. II *f*
 Rep. Cnt. *p* *f*
 2nd Cnt. *f*
 3rd Cnt. *f*
 Flug. *p* *f*
 Solo Hn. *p* *f*
 1st Hn. *p* *f*
 2nd Hn. *p* *f*
 1st Bar. *p* *f*
 2nd Bar. *p* *f*
 1st Tbn. *f*
 2nd Tbn. *f*
 B. Tbn. *f*
 Euph. *p* *f*
 Eb Bass *f*
 Bb Bass *f*
 Pno./Kbd. *f*
 E. Gtr. *f*
 B. Gtr. *f*
 Tamb. *p* *f*
 Cong. *p* *f*
 Dr. *p* *f*

Chords: G C CC(add9) C Em7 C G F F F^(b5) Am Em Dm7 G C C C(add9) C Em7 C
 Chords: G C Em7 C G F F^(b5) Am Em Dm7 G C Em7 C

Eb Cnt. *mf* *f* *f*
 Solo Cnt. I *fp cresc.* *mf* *f* *f*
 Solo Cnt. II *fp cresc.* *mf* *f* *f*
 Rep. Cnt. *mf* *f* *f*
 2nd Cnt. *fp cresc.* *mf* *f* *f*
 3rd Cnt. *fp cresc.* *mf* *f* *f*
 Flug. *mf* *f* *f*
 Solo Hn. *mf* *f* *f*
 1st Hn. *mf* *f* *f*
 2nd Hn. *mf* *f* *f*
 1st Bar. *mf* *f* *f*
 2nd Bar. *mf* *f* *f*
 1st Tbn. *fp cresc.* *mf* *f* *f*
 2nd Tbn. *fp cresc.* *mf* *f* *f*
 B. Tbn. *fp cresc.* *mf* *f* *f*
 Euph. *mf* *f* *f*
 Eb Bass *fp cresc.* *mf* *f* *f*
 Bb Bass *fp cresc.* *mf* *f* *f*
 Pno./Kbd. *fp cresc.* *mf* *f* *f*
 E. Gtr. *fp cresc.* *mf* *f* *f*
 B. Gtr. *fp cresc.* *mf* *f* *f*
 Tamb. (4) 2/4 (2) (3)
 Cong. 2/4
 Dr. (7) (8) (2) (3)

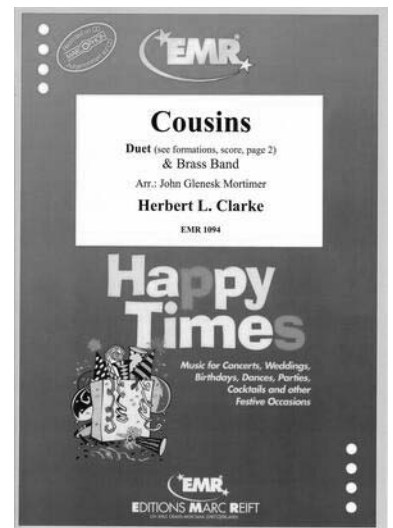
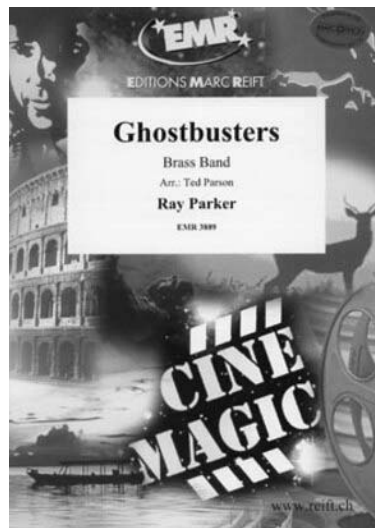
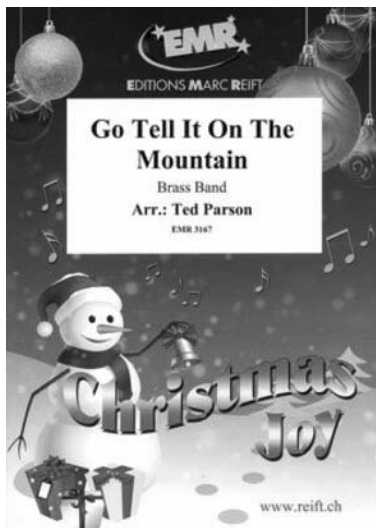
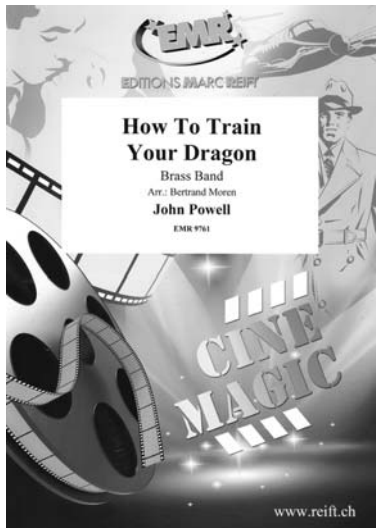
G F F Em F6 C(add9) Em Dm G Eb Bb7(sus4) Eb Bb(omit3) Eb Bb Cm G7(sus4)/C Cm Gm

Eb Cnt.
 Solo Cnt. I
 Solo Cnt. II
 Rep. Cnt.
 2nd Cnt.
 3rd Cnt.
 Flug.
 Solo Hn.
 1st Hn.
 2nd Hn.
 1st Bar.
 2nd Bar.
 1st Tbn.
 2nd Tbn.
 B. Tbn.
 Euph.
 Eb Bass
 Bb Bass
 Pno./Kbd.
 E. Gtr.
 B. Gtr.
 Tamb.
 Cong.
 Dr.

Cm Gm Ab Bb Eb Eb(sus4) Eb Ab Bb Eb F C7(sus4) F C(omit3) F C

(4) (5) (6) (7) (8)

Collection Brass Band



Discover all our scores for Brass Band

Entdecken Sie alle unsere Noten für Brass Band

Découvrez toutes nos partitions pour Brass Band

SCAN
ME >



Use the filters to refine your search and find for example the style of your choice!

Nutzen Sie die Filter, um Ihre Suche zu verfeinern und zum Beispiel den Stil Ihrer Wahl zu finden!

Utilisez les filtres pour affiner votre recherche et trouver par exemple le style de votre choix!