

Play The Oboe

with the

Philharmonic Wind Orchestra

Famous Overtures 5

EMR 31079

- 1) **Die Schöne Galathée** (Suppé)
- 2) **La Traviata** (Verdi)
- 3) **Don Pasquale** (Donizetti)
- 4) **The Queen Of Spades** (Tchaikovsky)
- 5) **La Vie Parisienne** (Offenbach)
- 6) **Coriolan** (Beethoven)
- 7) **Giselle** (Adam)
- 8) **Norma** (Bellini)
- 9) **An American In Paris** (Gershwin)

Print & Listen
Drucken & Anhören
Imprimer & Ecouter



www.reift.ch



EDITIONS MARC REIFT

Route du Golf 150 • CH-3963 Crans-Montana (Switzerland)

Tel. +41 (0) 27 483 12 00 • Fax +41 (0) 27 483 42 43 • E-Mail : info@reift.ch • www.reift.ch

DISCOGRAPHY



Famous Overtures 5

| Track N° | Titel / Title (Komponist / Composer) | Time | N° EMR Blasorchester Concert Band | N° EMR Brass Band |
|----------|--------------------------------------|------|-----------------------------------|-------------------|
| 1 | Die Schöne Galathée (Suppé) | 6'37 | EMR 12038 | - |
| 2 | La Traviata (Verdi) | 3'12 | EMR 11875 | - |
| 3 | Don Pasquale (Donizetti) | 6'10 | EMR 12024 | - |
| 4 | The Queen Of Spades (Tchaikovsky) | 3'37 | EMR 11865 | - |
| 5 | La Vie Parisienne (Offenbach) | 5'18 | EMR 11876 | - |
| 6 | Coriolan (Beethoven) | 7'37 | EMR 11874 | - |
| 7 | Giselle (Adam) | 5'43 | EMR 11993 | - |
| 8 | Norma (Bellini) | 5'54 | EMR 12021 | - |
| 9 | An American In Paris (Gershwin) | 8'08 | EMR 11926 | EMR 9512 |

Zu bestellen bei • A commander chez • To be ordered from:

Editions Marc Reift • Route du Golf 150 • CH-3963 Crans-Montana (Switzerland) • Tel. +41 (0) 27 483 12 00 • Fax +41 (0) 27 483 42 43 • E-Mail: info@reift.ch • www.reift.ch

OBOE

Die schöne Galathée

The Beautiful Galatea

Franz von Suppé

Arr.: John Glenesk Mortimer

Allegro $\text{♩} = 120$ Photocopying
is illegal!

EMR 31079

© COPYRIGHT BY EDITIONS MARC REIFT CH-3963 CRANS-MONTANA (SWITZERLAND)
ALL RIGHTS RESERVED - INTERNATIONAL COPYRIGHT SECURED

www.reift.ch

OBOE

La Traviata

Prelude

Giuseppe Verdi

Arr.: John Glenesk Mortimer

Adagio ♩ = 66

 Photocopying
is illegal!



12

pp cresc. *mf* *f* *p espr.*

A 1



20

p *p* *pp* *p* *pp*

B 10



37

p *pp* *p*



44

pp *dim.*

EMR 31079
© COPYRIGHT BY EDITIONS MARC REIFT CH-3963 CRANS-MONTANA (SWITZERLAND)
ALL RIGHTS RESERVED - INTERNATIONAL COPYRIGHT SECURED

www.reift.ch

OBOE

Don Pasquale

Gaetano Donizetti

Arr.: John Glenesk Mortimer

Photocopying
is illegal!

Prestissimo ♩ = 92-100



Andante ♩ = 72

a tempo

poco
rit.

rit.

D Poco più ♩ = 80



Allegro moderato

♩ = 126

rall.

a tempo

rall.

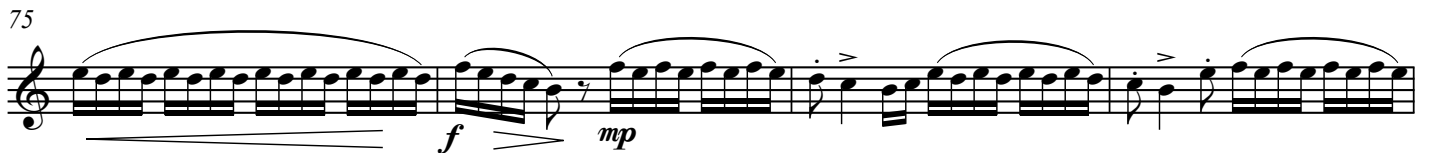
a tempo



a tempo

rall.

F



EMR 31079

© COPYRIGHT BY EDITIONS MARC REIFT CH-3963 CRANS-MONTANA (SWITZERLAND)
ALL RIGHTS RESERVED - INTERNATIONAL COPYRIGHT SECURED

www.reift.ch

OBOE

The Queen Of Spades

La Dame de Pique / Pique Dame

Pyotr Ilyitch Tchaikovsky

Arr.: John Glenesk Mortimer

Andante ♩ = 72

Prelude

Photocopying is illegal!

EMR 31079

© COPYRIGHT BY EDITIONS MARC REIFT CH-3963 CRANS-MONTANA (SWITZERLAND)
ALL RIGHTS RESERVED - INTERNATIONAL COPYRIGHT SECURED

www.reift.ch

OBOE

La Vie Parisienne

Jacques Offenbach

Arr.: John Glenesk Mortimer

Vivo ♩ = 152

Photocopying
is illegal!



12



23



33

A Waltz ♩ = 66

B

19



59



67



75

C



81



88



OBOE

Coriolan

Ludwig van Beethoven

Arr.: John Glenesk Mortimer

Allegro $\text{♩} = 88$

 Photocopying is illegal!

2 *ff* G.P. 2 G.P. 2

12 G.P. 3 *p* *cresc.* *f* G.P.

22 **A** 4 *p cresc.* *f* G.P. *p cresc.*

33 **B** *ff* *sf* *sf*

42 *sf sf sf sf sf sf sf sf sf sf sf*

52 **C** 4 *p* *cresc.* *ff* *p*

65 *cresc.* *ff* *p cresc.*

74 **D** *sf* *p* *pp* *cresc.*

82 *ff*

91 *sf sf sf sf*

98 **E**

OBOE

Giselle

Giselle's Entry / Waltz / Pas de deux / Galop

Adolphe Adam

Arr.: John Glenesk Mortimer

Photocopying is illegal!

Allegro ♩ = 132

ff

6 **A** **Andante** ♩ = 80 *Giselle's Entry*

mf

16

22 **B**

30 **C** **Allegretto** ♩ = 92

p

36

50 **D** **Waltz** ♩ = 172

ff sub. *mp*

57

65

73 **E** **11** *solo* *tutti*

ff

91 **F**

99

OBOE

Norma

Overture

Vincenzo Bellini

Arr.: John Glenesk Mortimer

Allegro ♩ = 132

Photocopying is illegal!

14 Lento ♩ = 72 **A** Allegro ♩ = 132

45 **C**

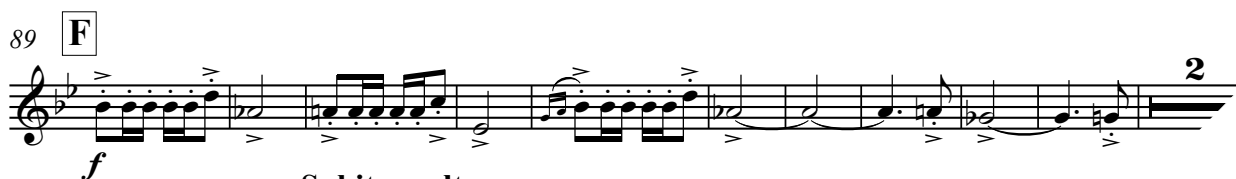
72 **D**

OBOE

An American In Paris

George Gershwin

Arr.: John Glenesk Mortimer

Allegretto $\text{♩} = 100$ Photocopying
is illegal!

Play The 1st.... With The Wind Orchestra

FAMOUS OVERTURES 2

**La Gazza Ladra (Rossini) – Romeo & Juliet (Tchaikovsky) – Egmont (Beethoven) – Dichter und Bauer (Suppé)
The Mastersingers (Wagner) – Der Schauspieldirektor (Mozart)**



| | |
|-----------|--|
| EMR 31018 | Play the 1 st Flute |
| EMR 31020 | Play the 1 st Clarinet |
| EMR 31019 | Play the 1 st Oboe |
| EMR 31021 | Play the 1 st Alto Saxophone |
| EMR 31022 | Play the 1 st Tenor Saxophone |
| EMR 31023 | Play the 1 st Trumpet |
| EMR 31024 | Play the 1 st F Horn |
| EMR 31025 | Play the 1 st Trombone (♭) |
| EMR 31026 | Play the 1 st Baritone (♭) |
| EMR 31027 | Play the Tuba |

FAMOUS OVERTURES 3

**Tancredi Overture (Rossini) – Prince Igor (Borodin) – Overture Il Seraglio (Mozart) – Tannhäuser (Wagner)
Prelude To Werther (Massenet) – The Messiah (Händel) – Rigoletto (Verdi) – Orphée Aux Enfers (Offenbach)**



| | |
|-----------|--|
| EMR 31038 | Play the 1 st Flute |
| EMR 31040 | Play the 1 st Clarinet |
| EMR 31039 | Play the 1 st Oboe |
| EMR 31041 | Play the 1 st Alto Saxophone |
| EMR 31042 | Play the 1 st Tenor Saxophone |
| EMR 31043 | Play the 1 st Trumpet |
| EMR 31044 | Play the 1 st F Horn |
| EMR 31045 | Play the 1 st Trombone (♭) |
| EMR 31046 | Play the 1 st Baritone (♭) |
| EMR 31047 | Play the Tuba |

FAMOUS OVERTURES 4

**Overture "1812" (Tchaikovsky) – L'Italiana in Algeri (Rossini) – Cuban Overture (Gershwin) – Macbeth (Verdi)
Ride Of The Valkyries (Wagner) – Das Land des Lächelns (Lehár) – Festive Overture (Shostakovich)**



| | |
|-----------|--|
| EMR 31058 | Play the 1 st Flute |
| EMR 31060 | Play the 1 st Clarinet |
| EMR 31059 | Play the 1 st Oboe |
| EMR 31061 | Play the 1 st Alto Saxophone |
| EMR 31062 | Play the 1 st Tenor Saxophone |
| EMR 31063 | Play the 1 st Trumpet |
| EMR 31064 | Play the 1 st F Horn |
| EMR 31065 | Play the 1 st Trombone (♭) |
| EMR 31066 | Play the 1 st Baritone (♭) |
| EMR 31067 | Play the Tuba |

FAMOUS OVERTURES 5

**Die Schöne Galathée (Suppé) – La Traviata (Verdi) – Don Pasquale (Donizetti) – The Queen Of Spades (Tchaikovsky)
La Vie Parisienne (Offenbach) – Coriolan (Beethoven) – Giselle (Adam) – Norma (Bellini) – An American In Paris (Gershwin)**



| | |
|-----------|--|
| EMR 31078 | Play the 1 st Flute |
| EMR 31080 | Play the 1 st Clarinet |
| EMR 31079 | Play the 1 st Oboe |
| EMR 31081 | Play the 1 st Alto Saxophone |
| EMR 31082 | Play the 1 st Tenor Saxophone |
| EMR 31083 | Play the 1 st Trumpet |
| EMR 31084 | Play the 1 st F Horn |
| EMR 31085 | Play the 1 st Trombone (♭) |
| EMR 31086 | Play the 1 st Baritone (♭) |
| EMR 31087 | Play the Tuba |