

# Play The 1<sup>st</sup> Baritone (♫)

with the

*Philharmonic Wind Orchestra*

## Famous Overtures 5 + CD

EMR 31076

**Français:** Le CD inclus dans ce cahier n'est pas un CD Play Back / Play Along ! Sur le CD se trouve l'enregistrement de l'orchestre complet. Vous n'avez plus qu'à jouer par-dessus la musique, comme si vous faisiez partie de l'orchestre.

**Deutsch:** Die in diesem Heft enthaltene CD ist keine Play Back / Play Along CD! Auf der CD befindet sich die Aufnahme des gesamten Orchesters. Sie müssen nur über die Musik spielen, als ob Sie Teil des Orchesters wären.

**English:** The CD included in this booklet is not a Play Back / Play Along CD! On the CD is a recording of the complete orchestra. All you have to do is play along with the music, as if you were part of the orchestra.

- 1) Die Schöne Galathée (Suppé)
- 2) La Traviata (Verdi)
- 3) Don Pasquale (Donizetti)
- 4) The Queen Of Spades (Tchaikovsky)
- 5) La Vie Parisienne (Offenbach)
- 6) Coriolan (Beethoven)
- 7) Giselle (Adam)
- 8) Norma (Bellini)
- 9) An American In Paris (Gershwin)



**EDITIONS MARC REIFT**

Route du Golf 150 • CH-3963 Crans-Montana (Switzerland)

Tel. +41 (0) 27 483 12 00 • Fax +41 (0) 27 483 42 43 • E-Mail : [info@reift.ch](mailto:info@reift.ch) • [www.reift.ch](http://www.reift.ch)

# DISCOGRAPHY



## Famous Overtures 5

Track N°	Titel / Title (Komponist / Composer)	Time	N° EMR Blasorchester Concert Band	N° EMR Brass Band
1	Die Schöne Galathée (Suppé)	6'37	EMR 12038	-
2	La Traviata (Verdi)	3'12	EMR 11875	-
3	Don Pasquale (Donizetti)	6'10	EMR 12024	-
4	The Queen Of Spades (Tchaikovsky)	3'37	EMR 11865	-
5	La Vie Parisienne (Offenbach)	5'18	EMR 11876	-
6	Coriolan (Beethoven)	7'37	EMR 11874	-
7	Giselle (Adam)	5'43	EMR 11993	-
8	Norma (Bellini)	5'54	EMR 12021	-
9	An American In Paris (Gershwin)	8'08	EMR 11926	EMR 9512

**Zu bestellen bei • A commander chez • To be ordered from:**

Editions Marc Reift • Route du Golf 150 • CH-3963 Crans-Montana (Switzerland) • Tel. +41 (0) 27 483 12 00 • Fax +41 (0) 27 483 42 43 • E-Mail: info@reift.ch • www.reift.ch

B $\flat$  BARITONE 

# Die schöne Galathée

*The Beautiful Galatea*

Franz von Suppé

Arr.: John Glenesk Mortimer

Allegro  $\text{♩} = 120$ Photocopying  
is illegal!

7



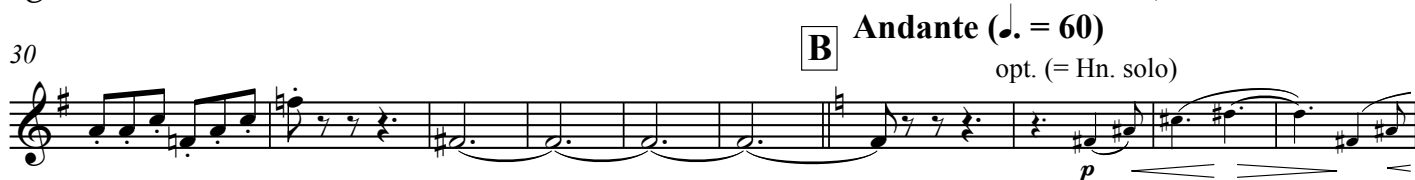
16



23



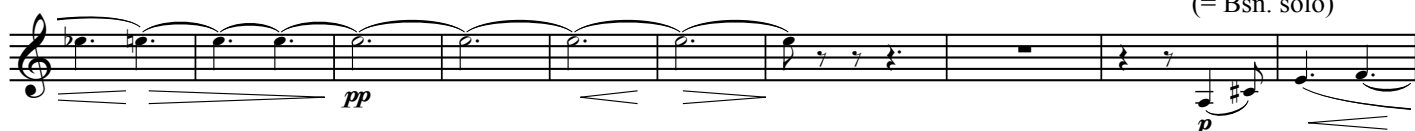
30



40



51



61



70



78



84



EMR 31076

B $\flat$  BARITONE 

# La Traviata

## Prelude

Giuseppe Verdi

Arr.: John Glenesk Mortimer

Adagio  $\text{♩} = 66$ Photocopying  
is illegal!

EMR 31076

© COPYRIGHT BY EDITIONS MARC REIFT CH-3963 CRANS-MONTANA (SWITZERLAND)  
ALL RIGHTS RESERVED - INTERNATIONAL COPYRIGHT SECURED

www.reift.ch

B $\flat$  BARITONE 

# Don Pasquale

Gaetano Donizetti

Arr.: John Glenesk Mortimer

**Prestissimo**  $\text{♩} = 92-100$ Photocopying  
is illegal!6 **A** **Andante**  $\text{♩} = 72$ 

25



32



43



51



57



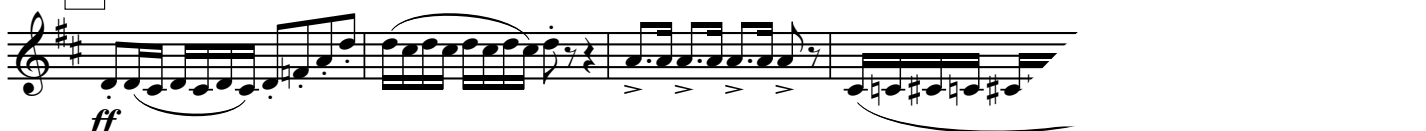
65



70



75

80 **G** **Vivo**  $\text{♩} = 144-160$ 

**B $\flat$  BARITONE** 

# The Queen Of Spades

*La Dame de Pique / Pique Dame*

Pyotr Ilyitch Tchaikovsky

Arr.: John Glenesk Mortimer

## Prelude

Andante  $\text{♩} = 72$

 Photocopying is illegal!



11



19

Same beat  $\text{♩} = 72$



24



28



36



46



EMR 31076

© COPYRIGHT BY EDITIONS MARC REIFT CH-3963 CRANS-MONTANA (SWIT)  
ALL RIGHTS RESERVED - INTERNATIONAL COPYRIGHT SECURED

B $\flat$  BARITONE 

# La Vie Parisienne

Jacques Offenbach

Arr.: John Glenesk Mortimer


 Photocopying  
is illegal!
Vivo  $\text{♩} = 152$ 

14



28



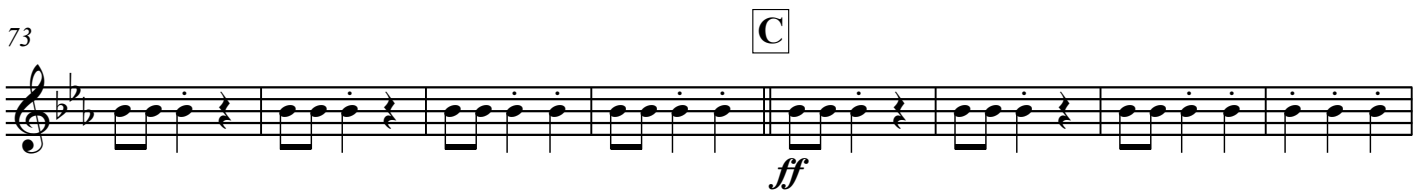
53



63



73



81



88



**B $\flat$  BARITONE** 

# Coriolan

Ludwig van Beethoven

Arr.: John Glenesk Mortimer

Allegro  $\text{♩} = 88$

G.P.

G.P.

 Photocopying is illegal!



B $\flat$  BARITONE 

# Giselle

Giselle's Entry / Waltz / Pas de deux / Galop

Adolphe Adam

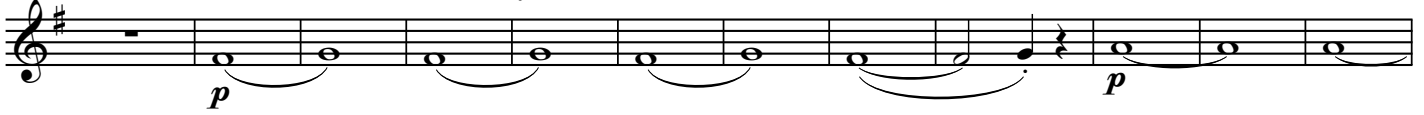
Arr.: John Glenesk Mortimer


 Photocopying  
is illegal!

**Allegro** ♩ = 132

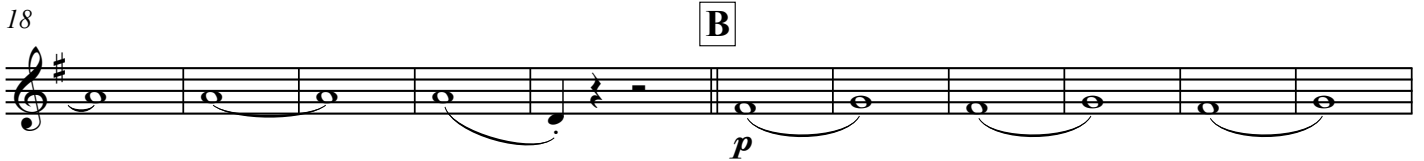


*ff*

6 **A** **Andante** ♩ = 80 *Giselle's Entry*


*p*

18 **B**



*p*

29 **C** **Allegretto** ♩ = 92


*p*

41



*ff*

52 **D** **Waltz** ♩ = 172


*p*

61



71 **E** 15



*ff*

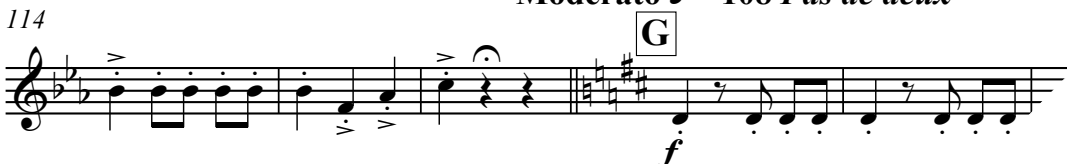
93 **F**



105


**Moderato** ♩ = 108 *Pas de deux*

114 **G**



*f*

**B $\flat$  BARITONE** 

# Norma

## Overture

Vincenzo Bellini

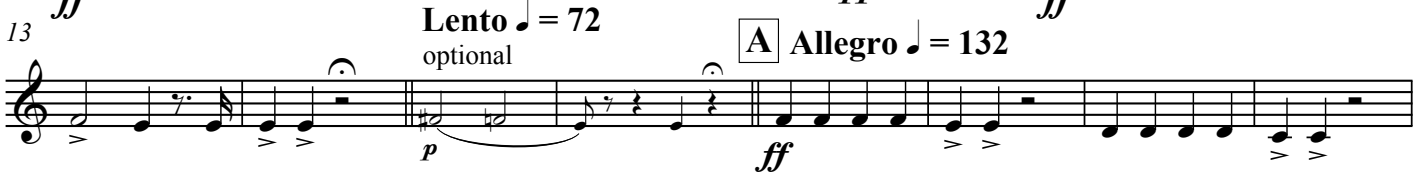
Arr.: John Glenesk Mortimer

**Allegro**  $\text{♩} = 132$

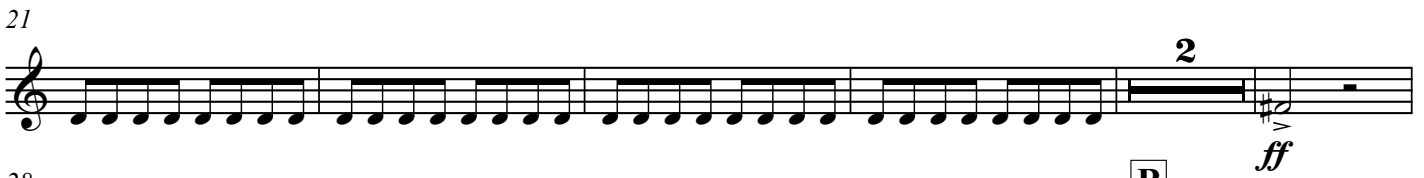
 Photocopying is illegal!




13 **Lento**  $\text{♩} = 72$  optional **A** **Allegro**  $\text{♩} = 132$



21 **2**



28 **B**



36 **mf** **pp**



41 **C** **mf** **cresc.** **mf cresc.** **ff**



48 **p** **pp**



59 **p** **cresc.**



70 **D** **ff**



78 **mf cresc.**



**B $\flat$  BARITONE** 

# An American In Paris

George Gershwin

Arr.: John Glenesk Mortimer

**Allegretto**  $\text{♩} = 100$

**A**

 Photocopying is illegal!

23 **B** **Più mosso**  $\text{♩} = 120$

44 **C**

58 **D** **Allegro**  $\text{♩} = 126$

70 **molto rit.**  $\text{♩} = 72$  **E** **Allegro**  $\text{♩} = 126$

79

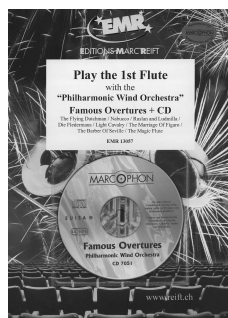
89 **F**

EMR 31076

# Play The 1<sup>st</sup>.... With The Wind Orchestra

## FAMOUS OVERTURES

The Flying Dutchman (Wagner) – Nabucco (Verdi) – Ruslan and Ludmilla (Glinka) – Die Fledermaus (Strauss) – Light Cavalry (Suppé)  
The Marriage Of Figaro (Mozart) – The Barber Of Seville (Rossini) – The Magic Flute (Mozart)



EMR 13057	Play the 1 <sup>st</sup> Flute + CD
EMR 13055	Play the 1 <sup>st</sup> Clarinet + CD
EMR 13097	Play the 1 <sup>st</sup> Oboe + CD
EMR 13103	Play the 1 <sup>st</sup> Alto Saxophone + CD
EMR 13109	Play the 1 <sup>st</sup> Tenor Saxophone + CD
EMR 13115	Play the 1 <sup>st</sup> Trumpet + CD
EMR 13139	Play the 1 <sup>st</sup> F Horn + CD
EMR 13121	Play the 1 <sup>st</sup> Trombone (♭) + CD
EMR 13127	Play the 1 <sup>st</sup> Baritone (♭) + CD
EMR 13133	Play the Tuba + CD

## ROMANTIC MOODS

Capriccio Italien (Tchaikovsky) – Slavonic Dance (Dvorak) – The Last Rose Of Summer (Flotow) – Pocco Allegretto (Brahms)  
Scheherazade (Rimsky-Korsakov) – Solvejg's Song (Grieg) – Serenade (Schubert) – Largo (Dvorak) – Barcarole (Offenbach)  
Adagio (Bethoven) – Morning Mood (Grieg) – The Moldau (Smetana) – Romance (Tchaikovsky) – Mattinata (Leoncavallo)  
Polovtsian Dances (Borodin)



EMR 13061	Play the 1 <sup>st</sup> Flute + CD
EMR 13059	Play the 1 <sup>st</sup> Clarinet + CD
EMR 13099	Play the 1 <sup>st</sup> Oboe + CD
EMR 13105	Play the 1 <sup>st</sup> Alto Saxophone + CD
EMR 13111	Play the 1 <sup>st</sup> Tenor Saxophone + CD
EMR 13117	Play the 1 <sup>st</sup> Trumpet + CD
EMR 13141	Play the 1 <sup>st</sup> F Horn + CD
EMR 13123	Play the 1 <sup>st</sup> Trombone (♭) + CD
EMR 13129	Play the 1 <sup>st</sup> Baritone (♭) + CD
EMR 13135	Play the Tuba + CD

## THE CHARM OF VIENNA

Thunder & Lightning Polka (Strauss) – Tales From The Vienna Woods (Strauss) – Egyptian March (Strauss) – Tritsch-Tratsch Polka (Strauss) – Rosen aus dem Süden (Strauss) – Emperor Waltz (Strauss) – Annen-Polka (Strauss) – The Skater's Waltz (Waldteufel)  
Persian March (Strauss) – Radetzky March (Strauss) – Petersburger Schlittenfahrt (Eilenberg) – Donauwellen (Ivanovici)  
The Blue Danube (Strauss)



EMR 13065	Play the 1 <sup>st</sup> Flute + CD
EMR 13063	Play the 1 <sup>st</sup> Clarinet + CD
EMR 13101	Play the 1 <sup>st</sup> Oboe + CD
EMR 13107	Play the 1 <sup>st</sup> Alto Saxophone + CD
EMR 13113	Play the 1 <sup>st</sup> Tenor Saxophone + CD
EMR 13119	Play the 1 <sup>st</sup> Trumpet + CD
EMR 13143	Play the 1 <sup>st</sup> F Horn + CD
EMR 13125	Play the 1 <sup>st</sup> Trombone (♭) + CD
EMR 13131	Play the 1 <sup>st</sup> Baritone (♭) + CD
EMR 13137	Play the Tuba + CD

## CLASSICS WITH SWING

Tchaikovsky Boogie (Tchaikovsky) – Solfeggietto (Bach) – Rondo Alla Cubana (Mozart) – Tango (Albéniz) – Moments Musicaux (Schubert)  
Bumblebee (Rimsky-Korsakov) – Serenata Amorosa (Toselli) – Viennese Cha Cha (Strauss) – Venice Junction (Strauss) – Love At Twenty (Zeller)  
Carmen (Bizet) – Rosen In Tiro (Zeller) – Meet The Bat (Strauss) – Verdi Goes Latin (Verdi) – Impromptu In Rhythm (Chopin)



EMR 13279	Play the 1 <sup>st</sup> Flute + CD
EMR 13280	Play the 1 <sup>st</sup> Clarinet + CD
EMR 13281	Play the 1 <sup>st</sup> Alto Saxophone + CD
EMR 13282	Play the 1 <sup>st</sup> Tenor Saxophone + CD
EMR 13283	Play the 1 <sup>st</sup> Trumpet + CD
EMR 13284	Play the 1 <sup>st</sup> Trombone (♭) + CD