

# Play The 1<sup>st</sup> Trombone (♭)

with the

*Philharmonic Wind Orchestra*

## Famous Overtures 5 + CD

EMR 31075

**Français:** Le CD inclus dans ce cahier n'est pas un CD Play Back / Play Along ! Sur le CD se trouve l'enregistrement de l'orchestre complet. Vous n'avez plus qu'à jouer par-dessus la musique, comme si vous faisiez partie de l'orchestre.

**Deutsch:** Die in diesem Heft enthaltene CD ist keine Play Back / Play Along CD! Auf der CD befindet sich die Aufnahme des gesamten Orchesters. Sie müssen nur über die Musik spielen, als ob Sie Teil des Orchesters wären.

**English:** The CD included in this booklet is not a Play Back / Play Along CD! On the CD is a recording of the complete orchestra. All you have to do is play along with the music, as if you were part of the orchestra.

- 1) Die Schöne Galathée (Suppé)
- 2) La Traviata (Verdi)
- 3) Don Pasquale (Donizetti)
- 4) The Queen Of Spades (Tchaikovsky)
- 5) La Vie Parisienne (Offenbach)
- 6) Coriolan (Beethoven)
- 7) Giselle (Adam)
- 8) Norma (Bellini)
- 9) An American In Paris (Gershwin)



**EDITIONS MARC REIFT**

Route du Golf 150 • CH-3963 Crans-Montana (Switzerland)

Tel. +41 (0) 27 483 12 00 • Fax +41 (0) 27 483 42 43 • E-Mail : [info@reift.ch](mailto:info@reift.ch) • [www.reift.ch](http://www.reift.ch)

# DISCOGRAPHY



## Famous Overtures 5

Track N°	Titel / Title (Komponist / Composer)	Time	N° EMR Blasorchester Concert Band	N° EMR Brass Band
1	Die Schöne Galathée (Suppé)	6'37	EMR 12038	-
2	La Traviata (Verdi)	3'12	EMR 11875	-
3	Don Pasquale (Donizetti)	6'10	EMR 12024	-
4	The Queen Of Spades (Tchaikovsky)	3'37	EMR 11865	-
5	La Vie Parisienne (Offenbach)	5'18	EMR 11876	-
6	Coriolan (Beethoven)	7'37	EMR 11874	-
7	Giselle (Adam)	5'43	EMR 11993	-
8	Norma (Bellini)	5'54	EMR 12021	-
9	An American In Paris (Gershwin)	8'08	EMR 11926	EMR 9512

**Zu bestellen bei • A commander chez • To be ordered from:**

Editions Marc Reift • Route du Golf 150 • CH-3963 Crans-Montana (Switzerland) • Tel. +41 (0) 27 483 12 00 • Fax +41 (0) 27 483 42 43 • E-Mail: info@reift.ch • www.reift.ch

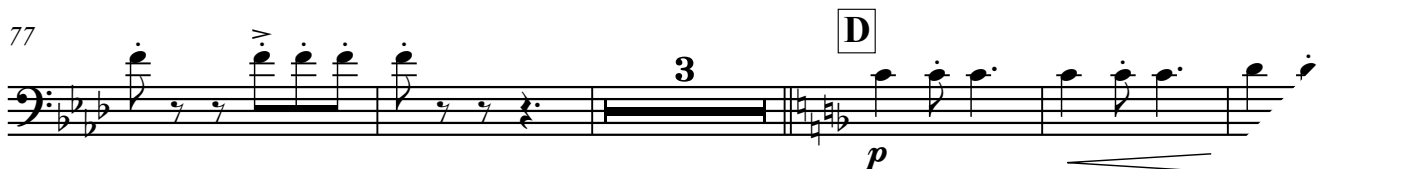
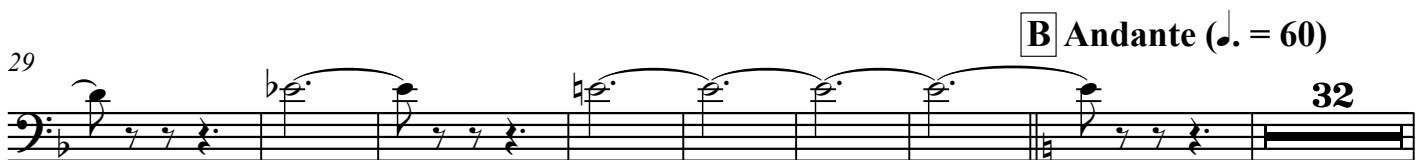
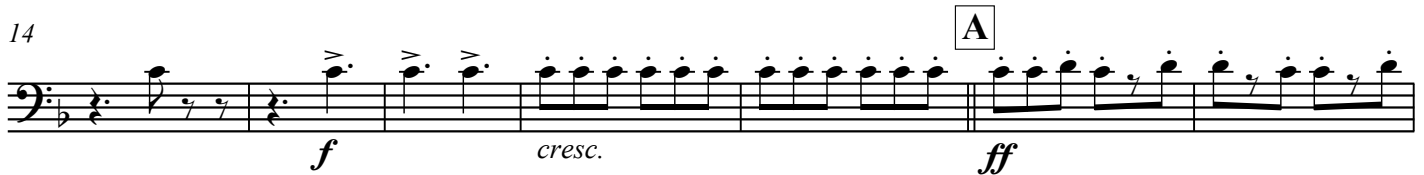
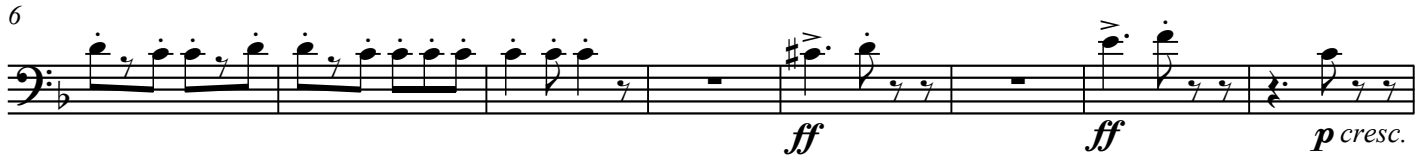
1st TROMBONE

## Die schöne Galathée

The Beautiful Galatea

Franz von Suppé

Arr.: John Glenesk Mortimer

Allegro  $\text{♩} = 120$ Photocopying  
is illegal!

1st TROMBONE

# La Traviata

## Prelude

Giuseppe Verdi

Arr.: John Glenesk Mortimer

Adagio ♩ = 66

Photocopying is illegal!

16 A 8 B

*pp* *pp*

30

36

*p* *pp*

43

*poc*

EMR 31075  
 © COPYRIGHT BY EDITIONS MARC REIFT CH-3963 CRANS-MONTANA (SWITZERLAND)  
 ALL RIGHTS RESERVED - INTERNATIONAL COPYRIGHT SECURED

[www.reift.ch](http://www.reift.ch)

1st TROMBONE

## Don Pasquale

Gaetano Donizetti

Arr.: John Glenesk Mortimer

Prestissimo  $\text{♩} = 92-100$ Photocopying  
is illegal!

*ff*

6 **A** **Andante**  $\text{♩} = 72$  **poco rit.** **B** **a tempo** **C** **rit.**

*pp* *pp*

38 **D** **Poco più**  $\text{♩} = 80$

*f*

48 **E** **Allegro moderato**  $\text{♩} = 126$  **rall.** **a tempo** **rall.** **a tempo** **rall.** **F** **a tempo**

*p*

69

74

*f* *p*

79 **G** **Vivo**  $\text{♩} = 144-160$

*ff*

85

90

# The Queen Of Spades

## La Dame de Pique / Pique Dame

### Prelude

Pyotr Ilyitch Tchaikovsky

Arr.: John Glenesk Mortimer

1st TROMBONE

Photocopying is illegal!

Andante  $\text{♩} = 72$

3

11

20 Same beat  $\text{♩} = 72$

27

34

45

EMR 31075

© COPYRIGHT BY EDITIONS MARC REIFT CH-3963 CRANS-MONTANA (SWITZERLAND)  
ALL RIGHTS RESERVED - INTERNATIONAL COPYRIGHT SECURED

www.reift.ch

## 1st TROMBONE

## La Vie Parisienne

Jacques Offenbach

Arr.: John Glenesk Mortimer

Vivo ♩ = 152

Photocopying  
is illegal!

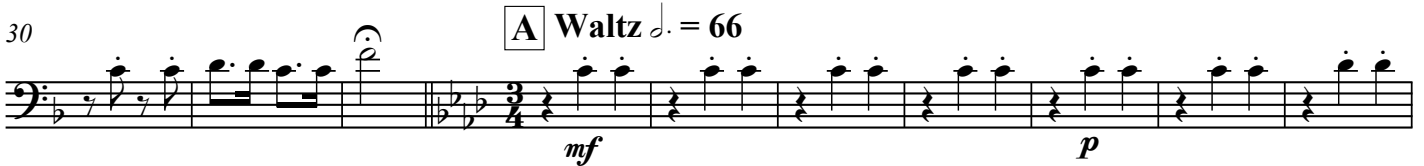
10



20



30



40



50



60



77



86



102



124



## 1st TROMBONE

## Coriolan

Ludwig van Beethoven

Arr.: John Glenesk Mortimer

Allegro  $\text{♩} = 88$ 


Photocopying is illegal!

**ff** **G.P.** **2** **G.P.** **2** **G.P.** **2**

**12** **G.P.** **5** **G.P.** **A** **5** **G.P.**

**29** **p cresc.** **ff**

**37** **B** **sf** **sf** **sf** **sf** **sf** **sf** **6**

**52** **C** **10** **6** **ff** **D** **6** **6** **ff**

**86** **sf** **sf** **sf**

**95** **sf**

**102** **E** **p** **f** **3** **f**

**112** **11** **p cresc.**

**133** **F** **f** **p sub.** **3** **f**

**143** **G** **4** **ff**

**154** **G.P.** **2** **sf** **sf** **2** **G.P.**



## 1st TROMBONE

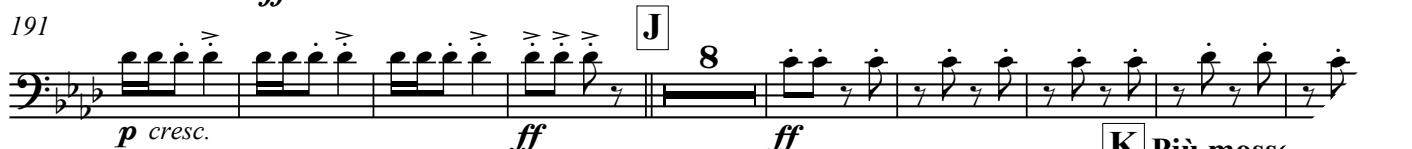
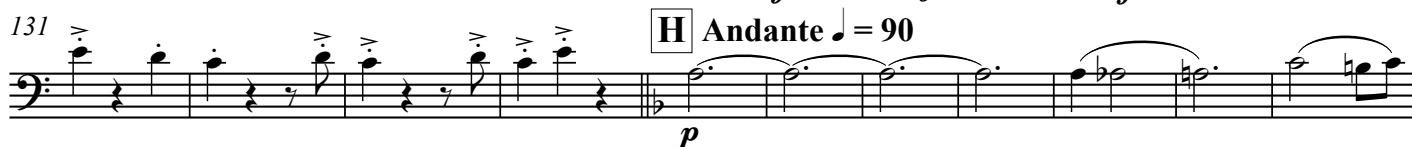
## Giselle

## Giselle's Entry / Waltz / Pas de deux / Galop

Adolphe Adam

Arr.: John Glenesk Mortimer

Allegro ♩ = 132

Photocopying  
is illegal!Andante ♩ = 80 *Giselle's Entry* Allegretto ♩ = 92 *Waltz* ♩ = 172

1st TROMBONE

# Norma

## Overture

Vincenzo Bellini

Arr.: John Glenesk Mortimer

Allegro ♩ = 132

Photocopying is illegal!

*ff*

6

*ff* *ff*

12

Lento ♩ = 72

**A** Allegro ♩ = 132

*ff*

19

24

*ff*

35

**B** 9

**C** 22

*mf cresc.* *ff*

72

**D**

*ff*

78

*mf cresc.*

## 1st TROMBONE

## An American In Paris

George Gershwin

Arr.: John Glenesk Mortimer

Allegretto  $\text{♩} = 100$ Photocopying  
is illegal!

10 **A** 9 *f* *f*

24 **B** Più mosso  $\text{♩} = 120$ 

*f* *mf*

32

4 *mf*

44 **C**

4 *mf*

57

**D** Allegro  $\text{♩} = 126$ 

*f* *mf cresc.*

68

molto rit.  $\text{♩} = 72$ **E** Allegro  $\text{♩} = 126$ 

2 *f* *f*

76

3 3 *p cresc.*

89 **F**

2 *f* *fp* < *f* *fp* < *f* *ff* *ossia*

103 **G**  $\text{♩} = 80$ Allegro  $\text{♩} = 126$ 

3 4 *f*

114

Tranquillo  $\text{♩} = 116$ 

rit.

5 4

# Play The 1<sup>st</sup>.... With The Wind Orchestra

## FAMOUS OVERTURES 2

La Gazza Ladra (Rossini) – Romeo & Juliet (Tchaikovsky) – Egmont (Beethoven) – Dichter und Bauer (Suppé)  
The Mastersingers (Wagner) – Der Schauspieldirektor (Mozart)



EMR 31008	Play the 1 <sup>st</sup> Flute + CD
EMR 31010	Play the 1 <sup>st</sup> Clarinet + CD
EMR 31009	Play the 1 <sup>st</sup> Oboe + CD
EMR 31011	Play the 1 <sup>st</sup> Alto Saxophone + CD
EMR 31012	Play the 1 <sup>st</sup> Tenor Saxophone + CD
EMR 31013	Play the 1 <sup>st</sup> Trumpet + CD
EMR 31014	Play the 1 <sup>st</sup> F Horn + CD
EMR 31015	Play the 1 <sup>st</sup> Trombone (♭) + CD
EMR 31016	Play the 1 <sup>st</sup> Baritone (♭) + CD
EMR 31017	Play the Tuba + CD

## FAMOUS OVERTURES 3

Tancredi Overture (Rossini) – Prince Igor (Borodin) – Overture Il Seraglio (Mozart) – Tannhäuser (Wagner)  
Prelude To Werther (Massenet) – The Messiah (Händel) – Rigoletto (Verdi) – Orphée Aux Enfers (Offenbach)



EMR 31028	Play the 1 <sup>st</sup> Flute + CD
EMR 31030	Play the 1 <sup>st</sup> Clarinet + CD
EMR 31029	Play the 1 <sup>st</sup> Oboe + CD
EMR 31031	Play the 1 <sup>st</sup> Alto Saxophone + CD
EMR 31032	Play the 1 <sup>st</sup> Tenor Saxophone + CD
EMR 31033	Play the 1 <sup>st</sup> Trumpet + CD
EMR 31034	Play the 1 <sup>st</sup> F Horn + CD
EMR 31035	Play the 1 <sup>st</sup> Trombone (♭) + CD
EMR 31036	Play the 1 <sup>st</sup> Baritone (♭) + CD
EMR 31037	Play the Tuba + CD

## FAMOUS OVERTURES 4

Overture "1812" (Tchaikovsky) – L'Italiana in Algeri (Rossini) – Cuban Overture (Gershwin) – Macbeth (Verdi)  
Ride Of The Valkyries (Wagner) – Das Land des Lächelns (Lehár) – Festive Overture (Shostakovich)



EMR 31048	Play the 1 <sup>st</sup> Flute + CD
EMR 31050	Play the 1 <sup>st</sup> Clarinet + CD
EMR 31049	Play the 1 <sup>st</sup> Oboe + CD
EMR 31051	Play the 1 <sup>st</sup> Alto Saxophone + CD
EMR 31052	Play the 1 <sup>st</sup> Tenor Saxophone + CD
EMR 31053	Play the 1 <sup>st</sup> Trumpet + CD
EMR 31054	Play the 1 <sup>st</sup> F Horn + CD
EMR 31055	Play the 1 <sup>st</sup> Trombone (♭) + CD
EMR 31056	Play the 1 <sup>st</sup> Baritone (♭) + CD
EMR 31057	Play the Tuba + CD

## FAMOUS OVERTURES 5

Die Schöne Galathée (Suppé) – La Traviata (Verdi) – Don Pasquale (Donizetti) – The Queen Of Spades (Tchaikovsky)  
La Vie Parisienne (Offenbach) – Coriolan (Beethoven) – Giselle (Adam) – Norma (Bellini) – An American In Paris (Gershwin)



EMR 31068	Play the 1 <sup>st</sup> Flute + CD
EMR 31070	Play the 1 <sup>st</sup> Clarinet + CD
EMR 31069	Play the 1 <sup>st</sup> Oboe + CD
EMR 31071	Play the 1 <sup>st</sup> Alto Saxophone + CD
EMR 31072	Play the 1 <sup>st</sup> Tenor Saxophone + CD
EMR 31073	Play the 1 <sup>st</sup> Trumpet + CD
EMR 31074	Play the 1 <sup>st</sup> F Horn + CD
EMR 31075	Play the 1 <sup>st</sup> Trombone (♭) + CD
EMR 31076	Play the 1 <sup>st</sup> Baritone (♭) + CD
EMR 31077	Play the Tuba + CD