

Play The 1st Trumpet

with the

Philharmonic Wind Orchestra

Famous Overtures 5 + CD

EMR 31073

Français: Le CD inclus dans ce cahier n'est pas un CD Play Back / Play Along ! Sur le CD se trouve l'enregistrement de l'orchestre complet. Vous n'avez plus qu'à jouer par-dessus la musique, comme si vous faisiez partie de l'orchestre.

Deutsch: Die in diesem Heft enthaltene CD ist keine Play Back / Play Along CD! Auf der CD befindet sich die Aufnahme des gesamten Orchesters. Sie müssen nur über die Musik spielen, als ob Sie Teil des Orchesters wären.

English: The CD included in this booklet is not a Play Back / Play Along CD! On the CD is a recording of the complete orchestra. All you have to do is play along with the music, as if you were part of the orchestra.

- 1) Die Schöne Galathée (Suppé)
- 2) La Traviata (Verdi)
- 3) Don Pasquale (Donizetti)
- 4) The Queen Of Spades (Tchaikovsky)
- 5) La Vie Parisienne (Offenbach)
- 6) Coriolan (Beethoven)
- 7) Giselle (Adam)
- 8) Norma (Bellini)
- 9) An American In Paris (Gershwin)



EDITIONS MARC REIFT

Route du Golf 150 • CH-3963 Crans-Montana (Switzerland)

Tel. +41 (0) 27 483 12 00 • Fax +41 (0) 27 483 42 43 • E-Mail : info@reift.ch • www.reift.ch

DISCOGRAPHY



Famous Overtures 5

Track N°	Titel / Title (Komponist / Composer)	Time	N° EMR Blsorchester Concert Band	N° EMR Brass Band
1	Die Schöne Galathée (Suppé)	6'37	EMR 12038	-
2	La Traviata (Verdi)	3'12	EMR 11875	-
3	Don Pasquale (Donizetti)	6'10	EMR 12024	-
4	The Queen Of Spades (Tchaikovsky)	3'37	EMR 11865	-
5	La Vie Parisienne (Offenbach)	5'18	EMR 11876	-
6	Coriolan (Beethoven)	7'37	EMR 11874	-
7	Giselle (Adam)	5'43	EMR 11993	-
8	Norma (Bellini)	5'54	EMR 12021	-
9	An American In Paris (Gershwin)	8'08	EMR 11926	EMR 9512

Zu bestellen bei • A commander chez • To be ordered from:

Editions Marc Reift • Route du Golf 150 • CH-3963 Crans-Montana (Switzerland) • Tel. +41 (0) 27 483 12 00 • Fax +41 (0) 27 483 42 43 • E-Mail: info@reift.ch • www.reift.ch

1st B \flat TRUMPET /
CORNET

Die schöne Galathée

The Beautiful Galatea

Franz von Suppé

Arr.: John Glenesk Mortimer

Allegro $\text{♩} = 120$

Photocopying
is illegal!

ff

p *ff* *p* *ff* *p cresc.*

f *cresc.* *ff* **A**

ff

Allegretto ($\text{♩} = 88$)

B *ff* **C** **D** *p*

ff **E**

ff

ff

ff **F**

Waltz $\text{♩} = 66$

p **G** **H**

1st B \flat TRUMPET /
CORNET

La Traviata

Prelude

Giuseppe Verdi

Arr.: John Glenesk Mortimer

Adagio $\text{♩} = 66$

Photocopying
is illegal!

16 A 8 B 8

f *p* *mf* *pp*

37

f *p* *pp* *f*

43

p *p*

46 **poco rall.**

dim. *pp*

EMR 31073
 © COPYRIGHT BY EDITIONS MARC REIFT CH-3963 CRANS-MONTANA (SWITZ)
 ALL RIGHTS RESERVED - INTERNATIONAL COPYRIGHT SECUREL

Don Pasquale

1st B \flat TRUMPET /
CORNET

Gaetano Donizetti

Arr.: John Glenesk Mortimer

Photocopying
is illegal!

Prestissimo $\text{♩} = 92-100$

Andante $\text{♩} = 72$ **a tempo**

Poco più $\text{♩} = 80$

Allegro moderato $\text{♩} = 126$ **a tempo** **rall.**

Vivo $\text{♩} = 144-160$

Presto $\text{♩} = 88-92$

6 **A** 15 **poco rit.** 2 **B** 8 **C** 6 **rit.** **D** 3 **f**

44 **E** 11 **rall.** 2 **rall.** 2

64 **a tempo** 2 **rall.** **F** **a tempo** **mf** **p**

71

76 **G** **Vivo** $\text{♩} = 144-160$ 3 **f** **ff**

85

91

97 **p** **p** **molto rit.** **H** **Allegro** $\text{♩} = 126$ 2 **f**

105 **(poco rit.)** **a tempo** 3 **f** 3 **f**

117 **poco rit.** **I** **Presto** $\text{♩} = 88-92$ 3 **p** **p**

1st B \flat TRUMPET /
CORNET

The Queen Of Spades

La Dame de Pique / Pique Dame

Pyotr Ilyitch Tchaikovsky

Arr.: John Glenesk Mortimer

Andante $\text{♩} = 72$

Prelude

Same beat $\text{♩} = 72$

Photocopying
is illegal!

15 **A**

22

29 **B**

38

44

EMR 31073
© COPYRIGHT BY EDITIONS MARC REIFT CH-3963 CRANS-MONTANA (SWITZERLAND)
ALL RIGHTS RESERVED - INTERNATIONAL COPYRIGHT SECURED

1st B \flat TRUMPET /
CORNET

La Vie Parisienne

Jacques Offenbach

Arr.: John Glenesk Mortimer

Vivo $\text{♩} = 152$ Photocopying
is illegal!

12

Waltz $\text{♩} = 66$

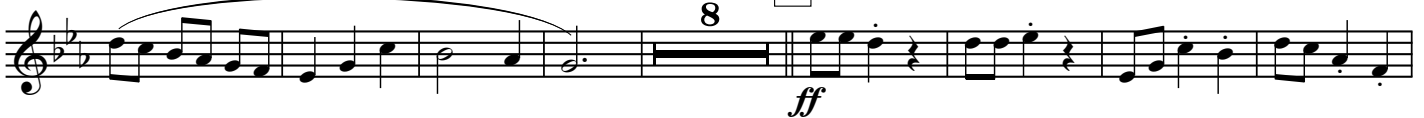
24



54



65



81



90



117



128



138



1st B \flat TRUMPET /
CORNET

Coriolan

Ludwig van Beethoven

Arr.: John Glenesk Mortimer

Allegro $\text{♩} = 88$

G.P.

2

G.P.

2

~~Photocopying is illegal!~~

1st B \flat TRUMPET /
CORNET

Giselle

Giselle's Entry / Waltz / Pas de deux / Galop

Adolphe Adam

Arr.: John Glenesk Mortimer

 Photocopying is illegal!

Allegro ♩ = 132

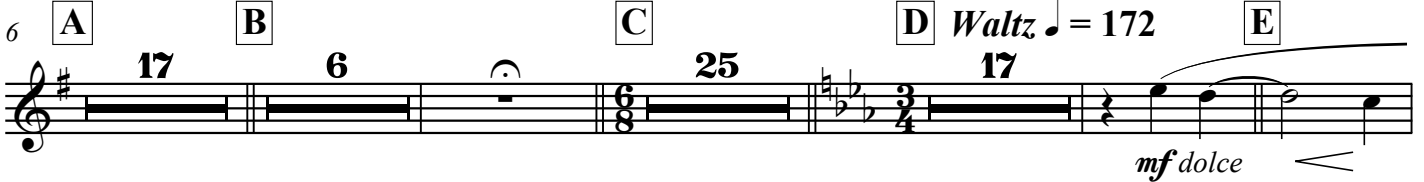


Andante ♩ = 80 *Giselle's Entry*

Allegretto ♩ = 92

solo (on Cornet or
Flugel if possible)

6 **A** 17 **B** 6 **C** 25 **D** *Waltz* ♩ = 172 **E**



74



85 **F**



95



106



Moderato ♩ = 108 *Pas de deux*

113 **G**



120



127



1st B \flat TRUMPET /
CORNET

Norma

Overture

Vincenzo Bellini

Arr.: John Glenesk Mortimer

Allegro $\text{♩} = 132$

Photocopying
is illegal!

15 Lento $\text{♩} = 72$ **A** Allegro $\text{♩} = 132$

1st B \flat TRUMPET /
CORNET

An American In Paris

George Gershwin

Arr.: John Glenesk Mortimer

Allegretto $\text{♩} = 100$

A

Photocopying
is illegal!

10 5 4

str. mute

f *f*

24 **B** Più mosso $\text{♩} = 120$

open

str. mute

open

f *f* *p*

34

str. mute

f

44 **C**

2

str. mute

open

f *p*

52

str. mute

f

60 **D** Allegro $\text{♩} = 126$

2

open

f *p cresc.* *f*

70 molto rit. $\text{♩} = 72$

2

E Allegro $\text{♩} = 126$

mf *f*

79

3 7

F

f

94

ff

100

G Subito molto meno $\text{♩} = 80$

3

Play The 1st.... With The Wind Orchestra

FAMOUS OVERTURES 2

**La Gazza Ladra (Rossini) – Romeo & Juliet (Tchaikovsky) – Egmont (Beethoven) – Dichter und Bauer (Suppé)
The Mastersingers (Wagner) – Der Schauspieldirektor (Mozart)**



EMR 31008	Play the 1 st Flute + CD
EMR 31010	Play the 1 st Clarinet + CD
EMR 31009	Play the 1 st Oboe + CD
EMR 31011	Play the 1 st Alto Saxophone + CD
EMR 31012	Play the 1 st Tenor Saxophone + CD
EMR 31013	Play the 1 st Trumpet + CD
EMR 31014	Play the 1 st F Horn + CD
EMR 31015	Play the 1 st Trombone (♭) + CD
EMR 31016	Play the 1 st Baritone (♭) + CD
EMR 31017	Play the Tuba + CD

FAMOUS OVERTURES 3

**Tancredi Overture (Rossini) – Prince Igor (Borodin) – Overture Il Seraglio (Mozart) – Tannhäuser (Wagner)
Prelude To Werther (Massenet) – The Messiah (Händel) – Rigoletto (Verdi) – Orphée Aux Enfers (Offenbach)**



EMR 31028	Play the 1 st Flute + CD
EMR 31030	Play the 1 st Clarinet + CD
EMR 31029	Play the 1 st Oboe + CD
EMR 31031	Play the 1 st Alto Saxophone + CD
EMR 31032	Play the 1 st Tenor Saxophone + CD
EMR 31033	Play the 1 st Trumpet + CD
EMR 31034	Play the 1 st F Horn + CD
EMR 31035	Play the 1 st Trombone (♭) + CD
EMR 31036	Play the 1 st Baritone (♭) + CD
EMR 31037	Play the Tuba + CD

FAMOUS OVERTURES 4

**Overture "1812" (Tchaikovsky) – L'Italiana in Algeri (Rossini) – Cuban Overture (Gershwin) – Macbeth (Verdi)
Ride Of The Valkyries (Wagner) – Das Land des Lächelns (Lehár) – Festive Overture (Shostakovich)**



EMR 31048	Play the 1 st Flute + CD
EMR 31050	Play the 1 st Clarinet + CD
EMR 31049	Play the 1 st Oboe + CD
EMR 31051	Play the 1 st Alto Saxophone + CD
EMR 31052	Play the 1 st Tenor Saxophone + CD
EMR 31053	Play the 1 st Trumpet + CD
EMR 31054	Play the 1 st F Horn + CD
EMR 31055	Play the 1 st Trombone (♭) + CD
EMR 31056	Play the 1 st Baritone (♭) + CD
EMR 31057	Play the Tuba + CD

FAMOUS OVERTURES 5

**Die Schöne Galathée (Suppé) – La Traviata (Verdi) – Don Pasquale (Donizetti) – The Queen Of Spades (Tchaikovsky)
La Vie Parisienne (Offenbach) – Coriolan (Beethoven) – Giselle (Adam) – Norma (Bellini) – An American In Paris (Gershwin)**



EMR 31068	Play the 1 st Flute + CD
EMR 31070	Play the 1 st Clarinet + CD
EMR 31069	Play the 1 st Oboe + CD
EMR 31071	Play the 1 st Alto Saxophone + CD
EMR 31072	Play the 1 st Tenor Saxophone + CD
EMR 31073	Play the 1 st Trumpet + CD
EMR 31074	Play the 1 st F Horn + CD
EMR 31075	Play the 1 st Trombone (♭) + CD
EMR 31076	Play the 1 st Baritone (♭) + CD
EMR 31077	Play the Tuba + CD