

Play The 1st Alto Sax

with the

Philharmonic Wind Orchestra

Famous Overtures 5 + CD

EMR 31071

Français: Le CD inclus dans ce cahier n'est pas un CD Play Back / Play Along ! Sur le CD se trouve l'enregistrement de l'orchestre complet. Vous n'avez plus qu'à jouer par-dessus la musique, comme si vous faisiez partie de l'orchestre.

Deutsch: Die in diesem Heft enthaltene CD ist keine Play Back / Play Along CD! Auf der CD befindet sich die Aufnahme des gesamten Orchesters. Sie müssen nur über die Musik spielen, als ob Sie Teil des Orchesters wären.

English: The CD included in this booklet is not a Play Back / Play Along CD! On the CD is a recording of the complete orchestra. All you have to do is play along with the music, as if you were part of the orchestra.

- 1) **Die Schöne Galathée** (Suppé)
- 2) **La Traviata** (Verdi)
- 3) **Don Pasquale** (Donizetti)
- 4) **The Queen Of Spades** (Tchaikovsky)
- 5) **La Vie Parisienne** (Offenbach)
- 6) **Coriolan** (Beethoven)
- 7) **Giselle** (Adam)
- 8) **Norma** (Bellini)
- 9) **An American In Paris** (Gershwin)



EDITIONS MARC REIFT

Route du Golf 150 • CH-3963 Crans-Montana (Switzerland)

Tel. +41 (0) 27 483 12 00 • Fax +41 (0) 27 483 42 43 • E-Mail : info@reift.ch • www.reift.ch

DISCOGRAPHY



Famous Overtures 5

Track N°	Titel / Title (Komponist / Composer)	Time	N° EMR Blsorchester Concert Band	N° EMR Brass Band
1	Die Schöne Galathée (Suppé)	6'37	EMR 12038	-
2	La Traviata (Verdi)	3'12	EMR 11875	-
3	Don Pasquale (Donizetti)	6'10	EMR 12024	-
4	The Queen Of Spades (Tchaikovsky)	3'37	EMR 11865	-
5	La Vie Parisienne (Offenbach)	5'18	EMR 11876	-
6	Coriolan (Beethoven)	7'37	EMR 11874	-
7	Giselle (Adam)	5'43	EMR 11993	-
8	Norma (Bellini)	5'54	EMR 12021	-
9	An American In Paris (Gershwin)	8'08	EMR 11926	EMR 9512

Zu bestellen bei • A commander chez • To be ordered from:

Editions Marc Reift • Route du Golf 150 • CH-3963 Crans-Montana (Switzerland) • Tel. +41 (0) 27 483 12 00 • Fax +41 (0) 27 483 42 43 • E-Mail: info@reift.ch • www.reift.ch

1st E♭ ALTO
SAXOPHONE

Die schöne Galathée

The Beautiful Galatea

Franz von Suppé

Arr.: John Glenesk Mortimer

Allegro ♩. = 120

Photocopying
is illegal!

1st E \flat ALTO
SAXOPHONE

La Traviata

Prelude

Giuseppe Verdi

Arr.: John Glenesk Mortimer

Adagio $\text{♩} = 66$

Photocopying
is illegal!

7 *pp* *cresc.* *mf* **A** 1 1

18 *p espr.* *p* *p* *pp* *p* *p* **B**

27 *mf* *mf* *f* *p* *mf*

36 *pp* *f* *p* *pp*

43 *p* *dim.* *pp*

EMR 31071
© COPYRIGHT BY EDITIONS MARC REIFT CH-3963 CRANS-MONTANA (SWITZ)
ALL RIGHTS RESERVED - INTERNATIONAL COPYRIGHT SECURED

1st E \flat ALTO
SAXOPHONE

Don Pasquale

Gaetano Donizetti

Arr.: John Glenesk Mortimer

Prestissimo $\text{♩} = 92-100$

Photocopying
is illegal!



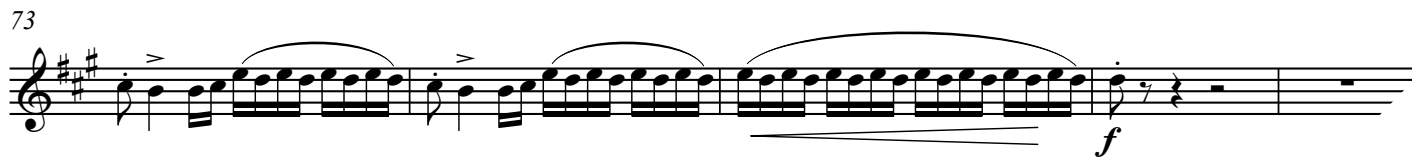
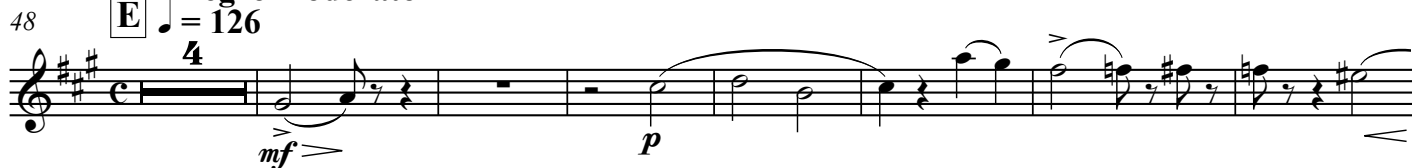
Andante $\text{♩} = 72$



Poco più $\text{♩} = 80$



Allegro moderato



1st E♭ ALTO
SAXOPHONE

La Vie Parisienne

Jacques Offenbach

Arr.: John Glenesk Mortimer

Vivo ♩ = 152

Photocopying
is illegal!

11

23

53

B

62

71

C

79

86

94

rit.

1st E \flat ALTO
SAXOPHONE

Coriolan

Ludwig van Beethoven

Arr.: John Glenesk Mortimer

 Photocopying
is illegal!

Allegro $\text{♩} = 88$

G.P.

G.P.



11

G.P.



21

G.P. **A**

3

G.P.



32

B



41



48

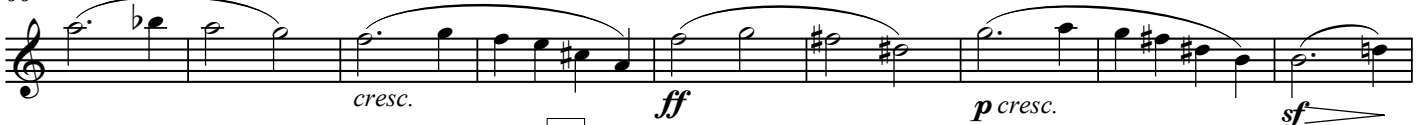
C



57



66



75

D



82



90



1st E♭ ALTO
SAXOPHONE

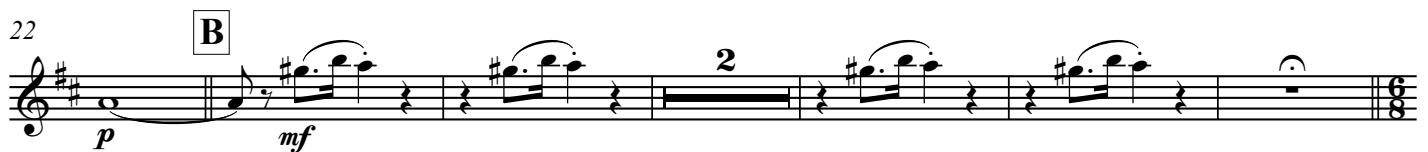
Giselle

Giselle's Entry / Waltz / Pas de deux / Galop

Adolphe Adam

Arr.: John Glenesk Mortimer

Allegro ♩ = 132

Photocopying
is illegal!6 **A** Andante ♩ = 80 *Giselle's Entry*30 **C** Allegretto ♩ = 9252 **D** Waltz ♩ = 172

1st E \flat ALTO
SAXOPHONE

Norma

Overture

Vincenzo Bellini

Arr.: John Glenesk Mortimer

Allegro $\text{♩} = 132$

Photocopying is illegal!

14 Lento $\text{♩} = 72$ **A** Allegro $\text{♩} = 132$

21

27

33 **B**

43 **C**

48

55

60

1st E \flat ALTO
SAXOPHONE

An American In Paris

George Gershwin

Arr.: John Glenesk Mortimer

Allegretto $\text{♩} = 100$

Photocopying
is illegal!

12 **A**

21 **B** Più mosso $\text{♩} = 120$

31

42 **C**

52

60 **D** Allegro $\text{♩} = 126$

70 **E** Allegro $\text{♩} = 126$

78

89 **F**

97

103 **G** Subito molto meno

$\text{♩} = 80$ $\text{♩} = 126$ Allegro

Play The 1st.... With The Wind Orchestra

FAMOUS OVERTURES 2

**La Gazza Ladra (Rossini) – Romeo & Juliet (Tchaikovsky) – Egmont (Beethoven) – Dichter und Bauer (Suppé)
The Mastersingers (Wagner) – Der Schauspieldirektor (Mozart)**



EMR 31008	Play the 1 st Flute + CD
EMR 31010	Play the 1 st Clarinet + CD
EMR 31009	Play the 1 st Oboe + CD
EMR 31011	Play the 1 st Alto Saxophone + CD
EMR 31012	Play the 1 st Tenor Saxophone + CD
EMR 31013	Play the 1 st Trumpet + CD
EMR 31014	Play the 1 st F Horn + CD
EMR 31015	Play the 1 st Trombone (♭) + CD
EMR 31016	Play the 1 st Baritone (♭) + CD
EMR 31017	Play the Tuba + CD

FAMOUS OVERTURES 3

**Tancredi Overture (Rossini) – Prince Igor (Borodin) – Overture Il Seraglio (Mozart) – Tannhäuser (Wagner)
Prelude To Werther (Massenet) – The Messiah (Händel) – Rigoletto (Verdi) – Orphée Aux Enfers (Offenbach)**



EMR 31028	Play the 1 st Flute + CD
EMR 31030	Play the 1 st Clarinet + CD
EMR 31029	Play the 1 st Oboe + CD
EMR 31031	Play the 1 st Alto Saxophone + CD
EMR 31032	Play the 1 st Tenor Saxophone + CD
EMR 31033	Play the 1 st Trumpet + CD
EMR 31034	Play the 1 st F Horn + CD
EMR 31035	Play the 1 st Trombone (♭) + CD
EMR 31036	Play the 1 st Baritone (♭) + CD
EMR 31037	Play the Tuba + CD

FAMOUS OVERTURES 4

**Overture "1812" (Tchaikovsky) – L'Italiana in Algeri (Rossini) – Cuban Overture (Gershwin) – Macbeth (Verdi)
Ride Of The Valkyries (Wagner) – Das Land des Lächelns (Lehár) – Festive Overture (Shostakovich)**



EMR 31048	Play the 1 st Flute + CD
EMR 31050	Play the 1 st Clarinet + CD
EMR 31049	Play the 1 st Oboe + CD
EMR 31051	Play the 1 st Alto Saxophone + CD
EMR 31052	Play the 1 st Tenor Saxophone + CD
EMR 31053	Play the 1 st Trumpet + CD
EMR 31054	Play the 1 st F Horn + CD
EMR 31055	Play the 1 st Trombone (♭) + CD
EMR 31056	Play the 1 st Baritone (♭) + CD
EMR 31057	Play the Tuba + CD

FAMOUS OVERTURES 5

**Die Schöne Galathée (Suppé) – La Traviata (Verdi) – Don Pasquale (Donizetti) – The Queen Of Spades (Tchaikovsky)
La Vie Parisienne (Offenbach) – Coriolan (Beethoven) – Giselle (Adam) – Norma (Bellini) – An American In Paris (Gershwin)**



EMR 31068	Play the 1 st Flute + CD
EMR 31070	Play the 1 st Clarinet + CD
EMR 31069	Play the 1 st Oboe + CD
EMR 31071	Play the 1 st Alto Saxophone + CD
EMR 31072	Play the 1 st Tenor Saxophone + CD
EMR 31073	Play the 1 st Trumpet + CD
EMR 31074	Play the 1 st F Horn + CD
EMR 31075	Play the 1 st Trombone (♭) + CD
EMR 31076	Play the 1 st Baritone (♭) + CD
EMR 31077	Play the Tuba + CD