

Preludio Gitano

Guitare

Colette Mourey

EMR 18144

Print & Listen
Drucken & Anhören
Imprimer & Ecouter



www.reift.ch



EDITIONS MARC REIFT

Route du Golf 150 • CH-3963 Crans-Montana (Switzerland)

Tel. +41 (0) 27 483 12 00 • Fax +41 (0) 27 483 42 43 • E-Mail : info@reift.ch • www.reift.ch

à Marcelo

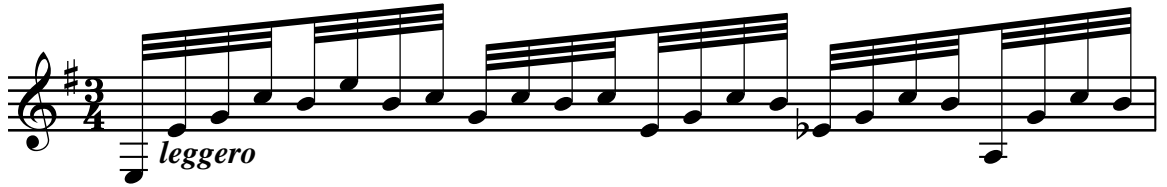
Preludio Gitano

pour guitare solo

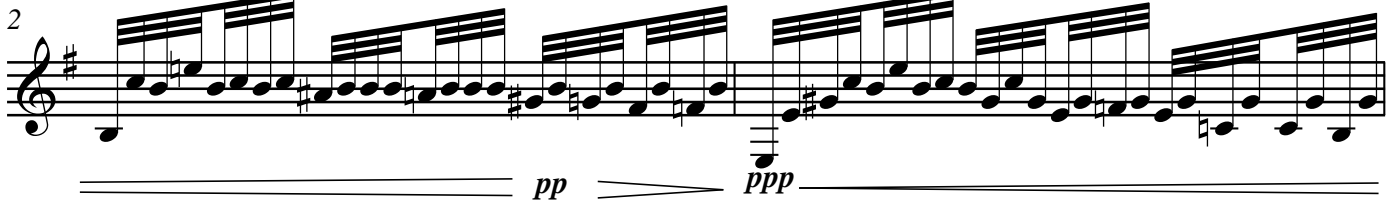
Colette Mourey

Allegro con fuoco $q = 132$

Photocopying
is illegal!



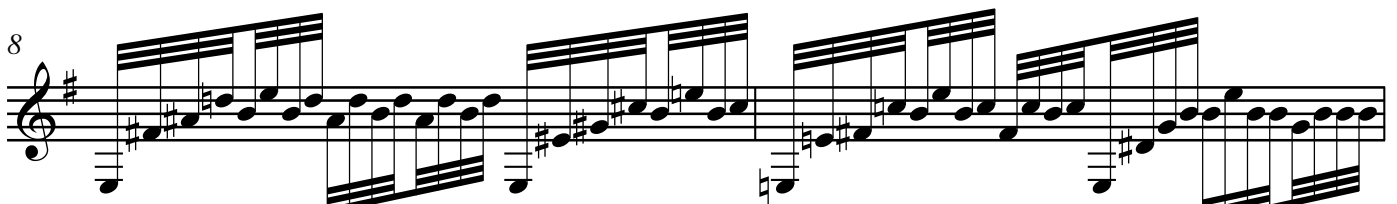
ppp lontan



pp ppp



pp



EMR 18144

© COPYRIGHT BY EDITIONS MARC REIFT CH-3963 CRANS-MONTANA (SWITZERLAND)
ALL RIGHTS RESERVED - INTERNATIONAL COPYRIGHT SECURED

www.reift.ch

10

-mp

Musical notation for measures 10 and 11. The music is in G major (one sharp) and 4/4 time. It features a treble clef and a dynamic marking of *-mp* (mezzo-piano). The melody consists of eighth-note patterns, often beamed in groups of four, with a steady bass line.

12

Musical notation for measures 12 and 13. The notation continues with similar eighth-note patterns in the treble clef.

14

-mf

Musical notation for measures 14 and 15. The dynamic marking changes to *-mf* (mezzo-forte). The eighth-note patterns continue.

16

Musical notation for measures 16 and 17. The notation continues with eighth-note patterns.

18

f

Musical notation for measures 18 and 19. The dynamic marking changes to *f* (forte). The eighth-note patterns continue.

20

Musical notation for measures 20 and 21. The notation continues with eighth-note patterns.

22

ff

23

fff

24

fff

ff

26

fff

27

p pp fff ff

30

ff mp doux mp p pp

mf très chanté

34

p bien prononcé

36

p bien prononcé

38

p bien prononcé

40

p bien prononcé

42

p bien prononcé

44

p bien prononcé

p bien articulé

46

f en dehors

48

50

52

54

56